



| MILLING | PROCESS | REFINERY | POWER PLANT | DISTILLERY |

YUTECH - MAKE MORE MONEY

YUTECH Offers Turnkey Automation and Instrumentation Solutions for Complete Integrated Sugar Complex consisting of Cane Sugar Factory, Sugar Refinery, Co-Generation Power Plant and Distillery.

At YUTECH, it is our commitment to Quality Instrumentation and Exceptional Customer Service that has remained the cornerstone of our success. YUTECH has a clear priority, to facilitate the best suited solutions to your specific needs.

YUTECH AUTOMATION - SYSTEMS AND PROJECTS UNDERTAKEN

- DCS/PLC based Turnkey Sugar Factory, Refinery, Power Plant and Distillery Automation and Instrumentation
- Complete Mill House, Sugar Process, Refinery, Condensor, Centrifugal Automation on PLC / DCS / Controllers
- Customized Automation and Instrumentation of any Process Industry, Distillery, Power Plants, Chemical Plants, Food and Beverages Plants, Starch Plants, Pharmaceuticals, Incinerators, Steel Plants and Machines
- Automation and Instrumentation Service and Maintenance Contracts for these Industries

THE YUTECH ADVANTAGE IS: ALL SOLUTIONS UNDER ONE ROOF:

YUTECH Provides all Specialized Sugar Mill, Sugar Process, Sugar Refinery, Boiler and Distillery Automation and Instrumentation Solutions, Researched, Developed and Implemented in Sugar Factory Environments of Indian, African and Asia Pacific Regions with an Experience of 42+ Years and 500+ Sugar Factories. YUTECH also manufactures Excellent Quality Mechanical Spare for Sugar Factories.

YUTECH SUGAR MILL PROCESS INSTRUMENTS

Measuring Sugars Brix By Brix

YUTECH AUTOMATION THE SWEETENER TO SUCCESS

TURNKEY
AUTOMATION &
INSTRUMENTATION
SOLUTIONS FOR
PROCESS
AND POWER
INDUSTRIES

SUGAR MILL
AND PROCESS
INSTRUMENTS,
ANALYZERS,
SENSORS

YUTECH FLOW CONTROLS CONTROL SAVE EARN

CSD OR IRIS
VALVES,
3-WAY VALVES,
SPECIAL
GATE VALVE FOR
LIME CONTROL

YUTECH

ALL SOLUTIONS
UNDER ONE ROOF

YUTECH AUTOMATION THE SWEETENER TO SUCCESS

AFTER SALE
SERVICES,
MAINTENANCE
SERVICES &
MAINTENANCE
CONTRACTS

YUTECH INSTRUMENTS ANALYZE TRANSMIT CONTROL COMMUNICATE

CONTROLLERS,
COMMUNICATIONS,
I/O CARDS, SENSORS,
TRANSMITTERS,
ISOLATION
BARRIERS

YUTECH MACHINES GENERATE CONSISTENT REVENUE

SPECIAL
PURPOSE
MACHINES AND
HIGHEST QUALITY
MACHINED
MECHANICAL
SPARES



**YUTECH SUGAR MILL PROCESS INSTRUMENTS
FOR MILL AND PROCESS SECTION**

YUTECH

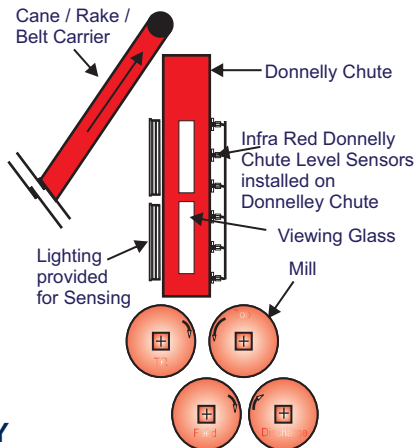
YUTECH

YUTECH INFRA RED DONNELLY CHUTE LEVEL SENSOR AND TRANSMISSION SYSTEM:

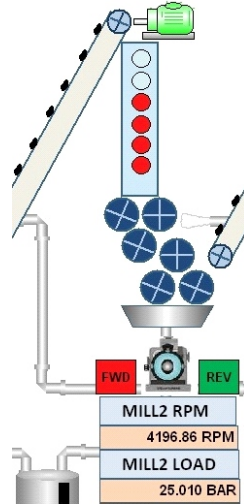
Please refer to our website www.yutech.in and www.yutechautomation.com. You can download detailed presentations of all Instruments, Automation, Systems, and Controls from our website. Please send your esteemed and valuable enquiries to sale@yutech.in. Please download **YUTECH SUGAR MILL PROCESS INSTRUMENTS** Brochure.



**INFRA RED DONNELLY
CHUTE LEVEL
SENSING AND
TRANSMISSION
SYSTEM**

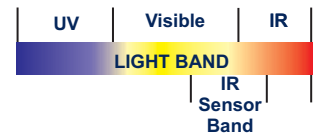


**SCHEMATIC DIAGRAM:
INFRA RED DONNELLY CHUTE
LEVEL SENSORS INSTALLATION**

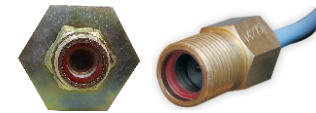


**MILL AUTOMATION
SCREENSHOT**

IR Sensor's Light Sensing Band for IR Type Donnelly Chute Level Sensors



**IR SENSOR
WAVELENGTH BAND**



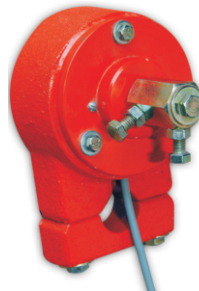
ASDDCLIRS12 ASDDCLIRS10

**INFRA RED DONNELLY
CHUTE LEVEL SENSOR**

YUTECH HALL'S EFFECT SENSORS FOR CANE BLANKET LEVEL AND TOP ROLLER LIFT:

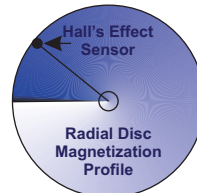


**HALL'S EFFECT TOP
ROLLER LIFT SENSOR**



**HALL'S EFFECT
CANE BLANKET
LEVEL SENSOR**

Hall's Effect Sensor's Radial Movement Senses Disc's Magnetization to determine its Position



**HALL'S
EFFECT POSITION
SENSOR**



TRANSMITTER

YUTECH ANALYZERS AND ANALYZERS CUM CUSTOMIZED PROCESS CONTROLLERS:



**AUTO RETRACTABLE SELF CLEANING
AND WASHING BRIX SENSOR**



BRIX ANALYZER



**BRIX ANALYZER CUM CVP CHAMBER CONTROL
SYSTEM STAND ALONE UNIT**



**MOTORIZED FLUID CONSISTENCY BRIX
SENSOR**



**FLUID CONSISTENCY BRIX
ANALYZER CUM VCP CHAMBER CONTROL
SYSTEM STAND ALONE UNIT**



**PH ANALYZER WITH AUTOMATIC
ELECTRODE CLEANING AND
ELECTRODE DECAY ALARM**



PH ANALYZER CUM CONTROLLER



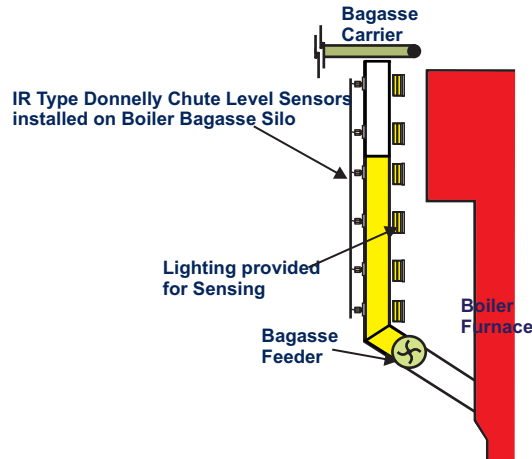
**YUTECH SUGAR MILL PROCESS INSTRUMENTS
FOR BOILER AND TURBINE SECTION**

YUTECH

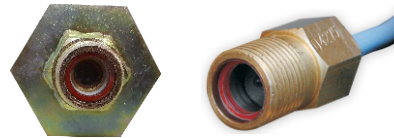
YUTECH

YUTECH INFRA RED SENSOR AND TRANSMISSION SYSTEM FOR BOILER BAGASSE SILOS:

Please refer to our website www.yutech.in and www.yutechautomation.com. You can download detailed presentations of all Instruments, Automation, Systems, and Controls from our website. Please send your esteemed and valuable enquiries to sale@yutech.in. Please download **YUTECH SUGAR MILL PROCESS INSTRUMENTS** Brochure.

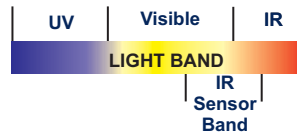


**SCHEMATIC DIAGRAM:
INFRA RED DONNELLY CHUTE
LEVEL SENSORS INSTALLATION**



**ASDDCLIRS12 ASDDCLIRS10
INFRA RED BAGASSE SILO
LEVEL SENSORS**

IR Sensor's Light Sensing Band for
IR Type Donnelly Chute Level Sensors



**IR SENSOR
WAVELENGTH BAND**



**INFRA RED DONNELLY
CHUTE LEVEL
SENSING AND
TRANSMISSION
SYSTEM**

DRAFT RANGE PRESSURE AND VACUUM TRANSMITTERS:



Draft Pressure Transmitter can be used to measure Air / Safe Gas Pressures at room temperature. Non Wetted Diaphragm Type. Available in Panel and Field Mounted Enclosures.

THERMOCOUPLE AND RTD TEMPERATURE TRANSMITTERS AND INDICATING CONTROLLERS:



**TC Temperature
Transmitter**



**Temperature
Indicator Controller**



RTD Transmitters

TC and RTD Temperature Transmitters Available in Panel and Field Mounted Enclosures.

Other YUTECH INSTRUMENTS Products:



**A12 Series Field
Mounted Transmitters,
Controllers**



**Auto / Manual
Stations**



**pH / Conductivity
Meter (Laboratory)**



**Process Indicator
Controller**



**Large or Jumbo Displays
1' to 12" digit size with
Wireless Remote Calibrator**



**A15 Series Field Mounted
Scanners with Ethernet (Modbus TCP/IP)**



I/O Cards



**CT Converter /
AC Voltage Converter**

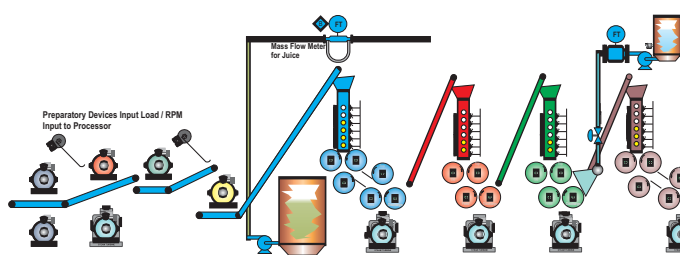


Process Indicator

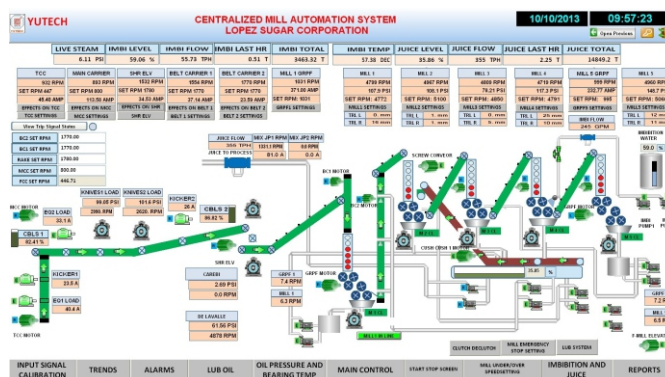


**Isolation Barriers
/ Signal Converters
/ Isolating Repeaters**

SUGAR MILL HOUSE AUTOMATION:



SCHEMATIC DIAGRAM: MILL CONTROL SYSTEM



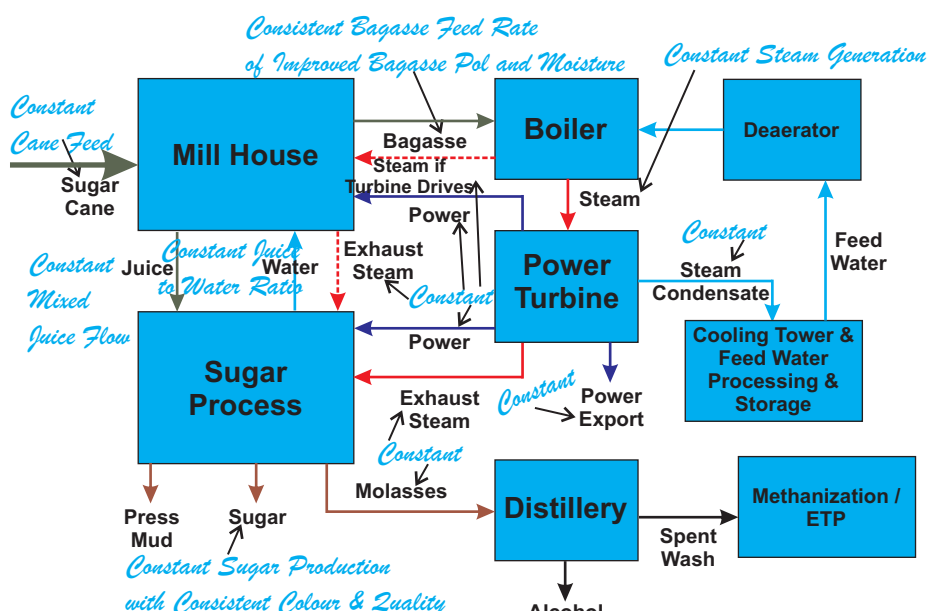
SCREEN SHOT: MILL CONTROL SYSTEM

YUTECH Sugar Mill Automation Ensures the following Advantages and Stabilizes The Whole Sugar Plant:

- Increased Milling with the Same Equipment
- Continuous and Un-interrupted Feeding reduces Downtime and Increase Throughput
- Elimination of Choking at Preparatory Devices, Mills, Chutes or Carriers increases Up Time and Consistency
- Maintained Juice to Imbibition Water Ratio increases Juice Evaporation Efficiency in Evaporators while ensuring Effective Water Saving. Further Cutting off Water Flow when Crushing is stopped ensures Dry Bagasse
- Optimum Mill Speeds w.r.t., Loads and Levels ensure good Milling and Stabilized Constant Mill Power Demand
- Constant Juice Flow for Process ensures even loading in the Boiling House and Stabilizes and Reduces the Steam Consumption which means higher Boiling House efficiency and Bagasse Saving
- Constant Bagasse Feeding to Boilers of Consistent Bagasse POL and Moisture Ensures Better Boiler Efficiency

YUTECH Sugar Mill Automation Features:

- Infra Red Type Donnelly Chute Level Sensors (We are Inventors and the Only Manufacturers of IR Sensors for Donnelly Chute Level) ensure Correct and Accurate Level Sensing through Raining Bagasse inside the Chute
- Hall's Effect Type Cane Blanket Level and Top Roller Lift Sensors
- Precision Motor Load / Pressure Sensors to sense Cane Preparatory Device / Mill / Pressure Feeder Load
- User Friendly Customized Mill Automation Software



BLOCK DIAGRAM OF MILL AUTOMATION ADVANTAGES

YUTECH Mill Automation Improves not only Mill Efficiency but also Boiler, Process and Overall Factory Efficiency, Quality and Performance

Hence Mill Automation Increases and Sustains Revenues Year on Year

Please refer to our detailed Mill Automation Presentation on www.vutech.in.



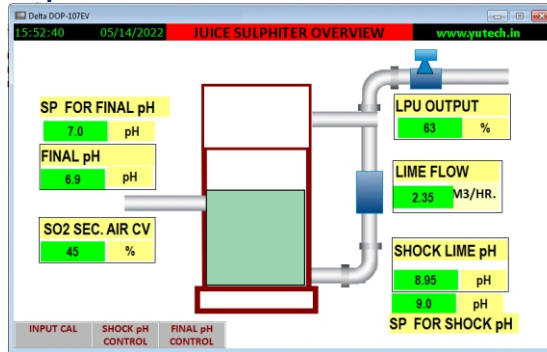
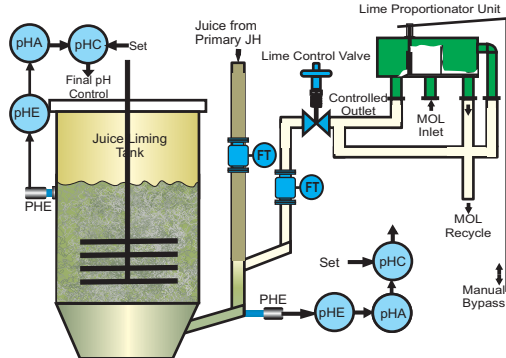
SUGAR PROCESS, REFINERY AND PHARMA GRADE SUGAR PROCESS AUTOMATION:

- Juice Heater / PHE Control System
- pH and Lime Dozing Automation
- Clarifier Automation
- Direct Contact Juice Heater Automation
- Evaporator Station Automation
- Batch and Continuous Pan Station Automation
- Juice / Syrup / Melt Clarifier Automation
- Vertical Continuous Pan Automation
- Condensor Automation
- Sugar Melter and Molasses Conditioner Automation
- Vertical Crystallizer Automation
- Superheated Wash Water System
- Pressure Reducing and De-Superheating Station Automation
- Steam and Vapour Balancing System
- Continuous Centrifugal Machine Automation
- Sugar Refinery / Pharma Grade Refinery Process Automation

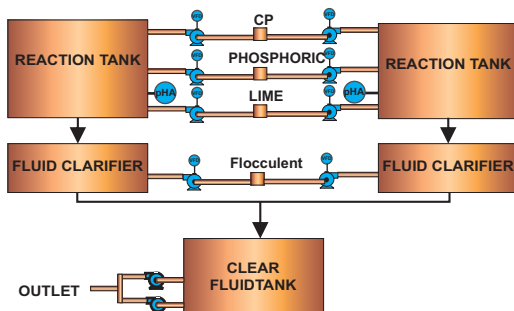
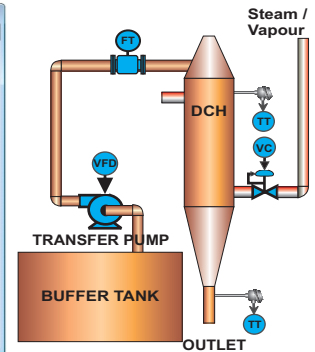
Operational Advantages of Process Automation:

- Stabilized Shock Lime and Final pH Ensures Better & Consistent Juice Clarity & Stabilized Dorr pH.
- Constant Evaporator Operation Ensures Smooth Sugar Manufacturing Process
- Maintained Evaporator Level Reduces / Eliminates Entrainment through Vapour
- Constant Evaporation results in Constant Vapour Generation hence better Heat Efficiency
- Pan Automations Ensure Maintained Grain Size thus better and constant Sugar Quality.
- All above advantages ensure Better Sugar Colour thus Higher Sugar Price.
- Increased Throughput in the same operation time and Optimum Capacity Utilization.
- Saves Power, Steam and Water thus Fuel Saving.
- Reduced Cost of Operation effect Substantial Economic Gains.

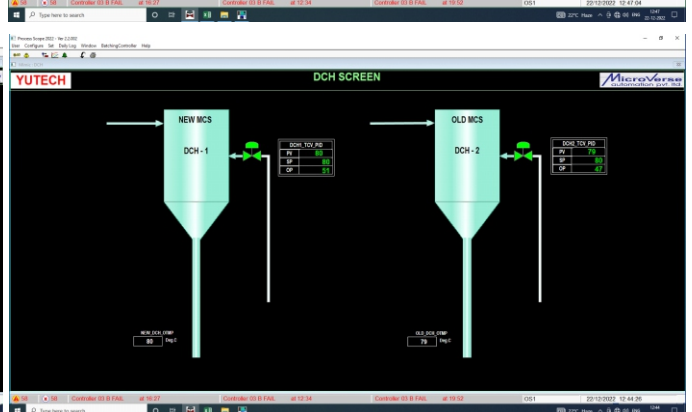
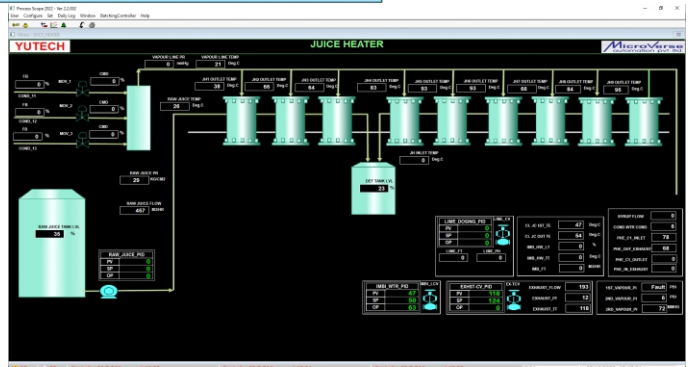
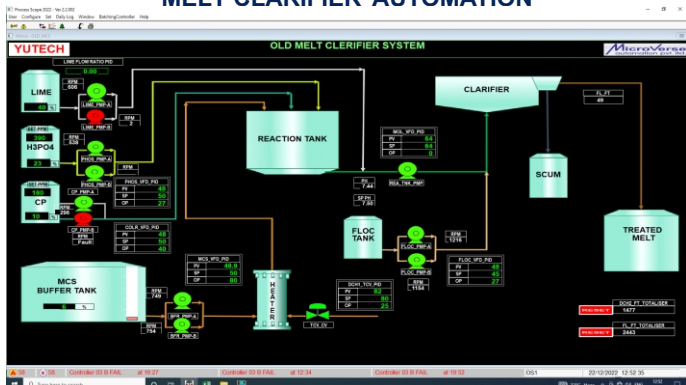
LIMING AUTOMATION OR pH CONTROL SYSTEM



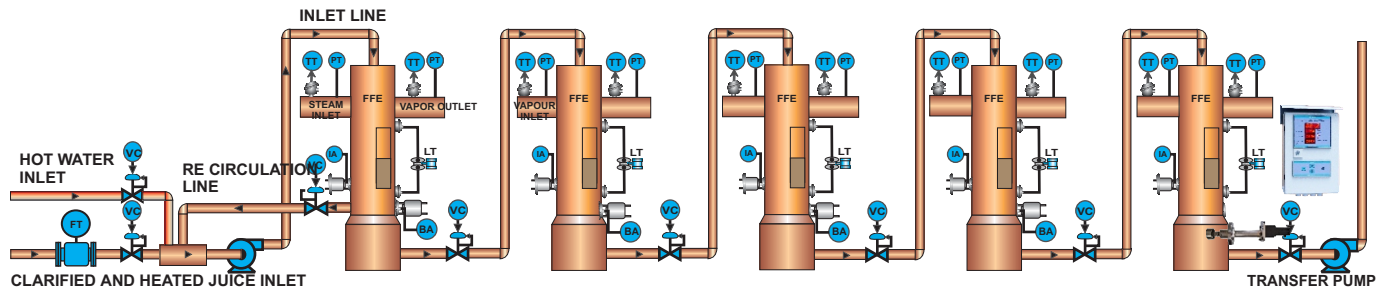
JUICE HEATER AND DIRECT CONTACT HEATER AUTOMATION



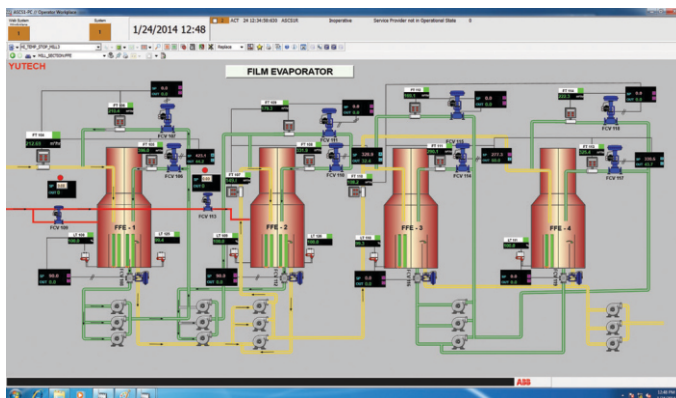
MELT CLARIFIER AUTOMATION



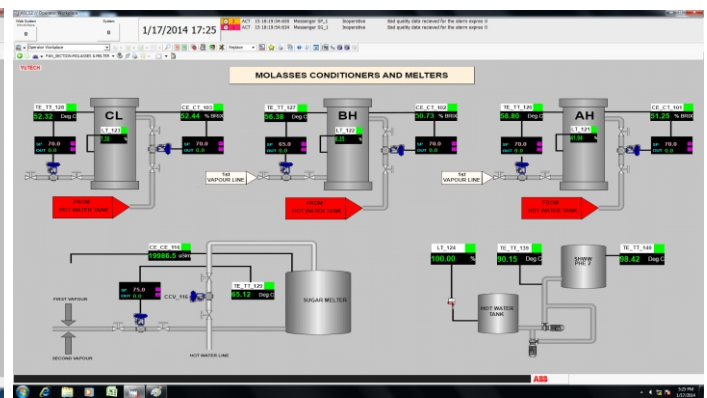
Please refer to our website www.yutech.in and www.yutechautomation.com. You can download detailed presentations of all Instruments, Automation, Systems, and Controls from our website. Please send your esteemed and valuable enquiries to sale@yutech.in.



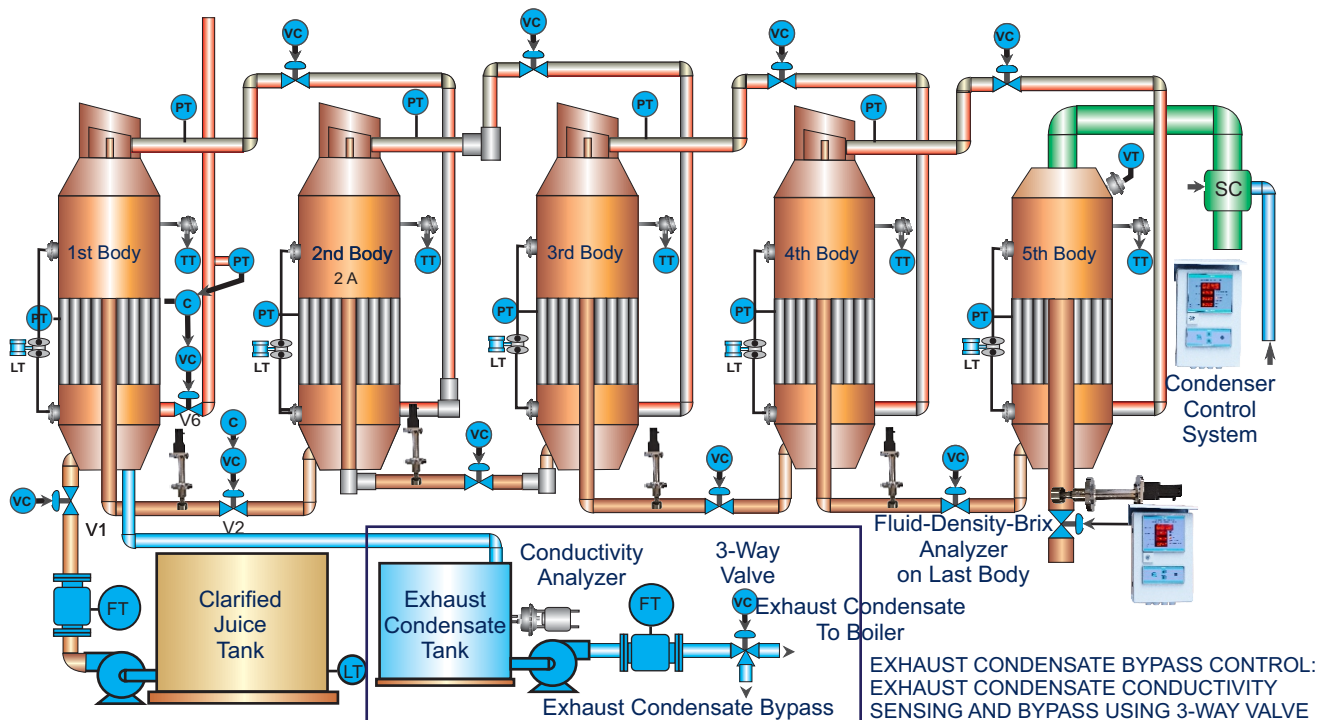
SCHEMATIC DIAGRAM: FALLING FILM EVAPORATOR AUTOMATION



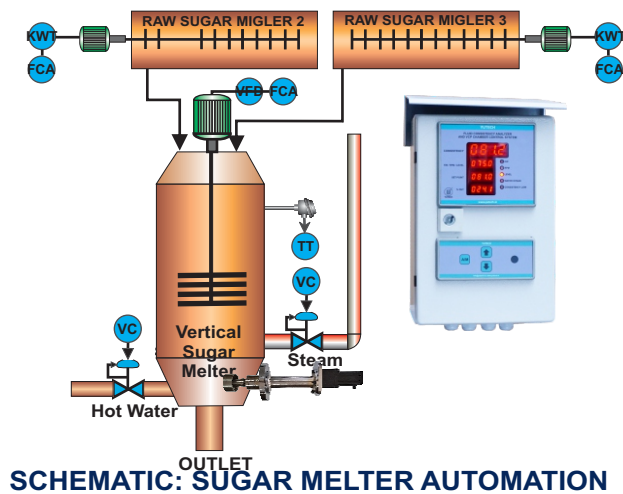
SCREEN SHOT: EVAPORATOR AUTOMATION



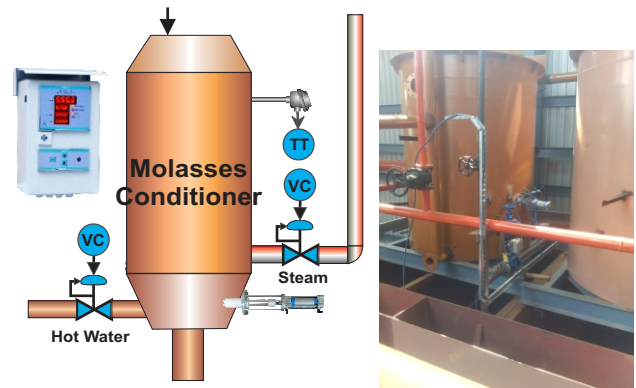
**SCREEN SHOT: SUGAR MELTER AND
MOLASSES CONDITIONER AUTOMATION**



SCHEMATIC DIAGRAM: RISING FILM EVAPORATOR AUTOMATION



SCHEMATIC: SUGAR MELTER AUTOMATION



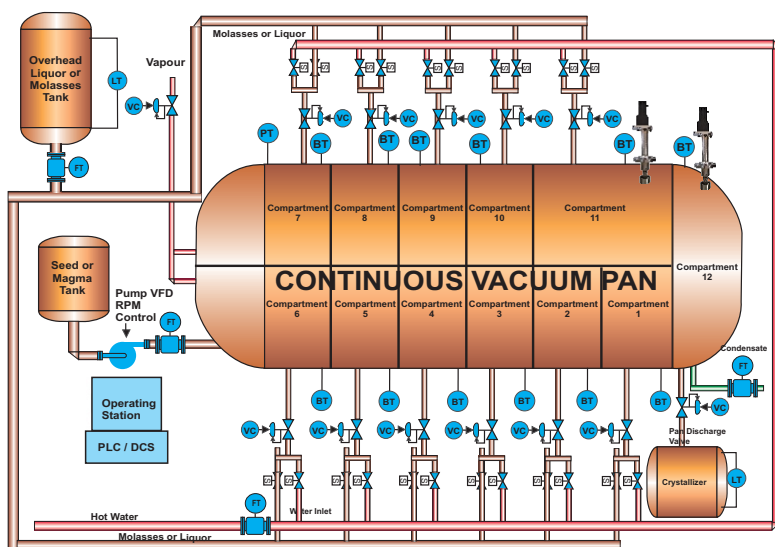
**SCHEMATIC DIAGRAM:
MOLASSES CONDITIONER AUTOMATION**



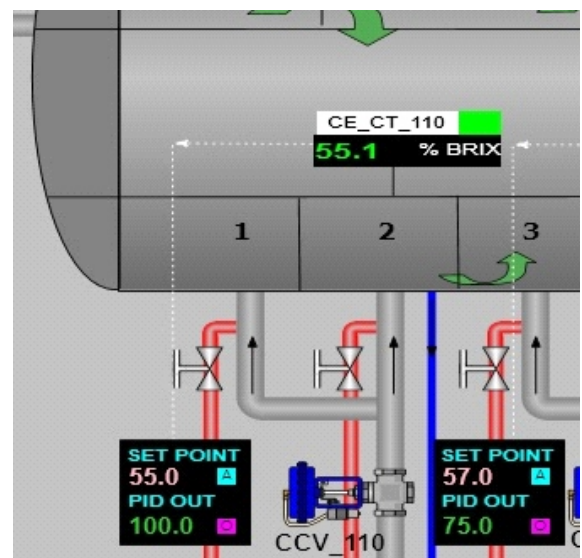
**SCREEN SHOT: HORIZONTAL CONTINUOUS
VACUUM PAN AUTOMATION
USING YUTECH BRX ANALYZER**



**PICTURE OF YUTECH SELF CLEANING AUTO
RETRACTABLE BRX SENSOR INSTALLED ON CV PAN**



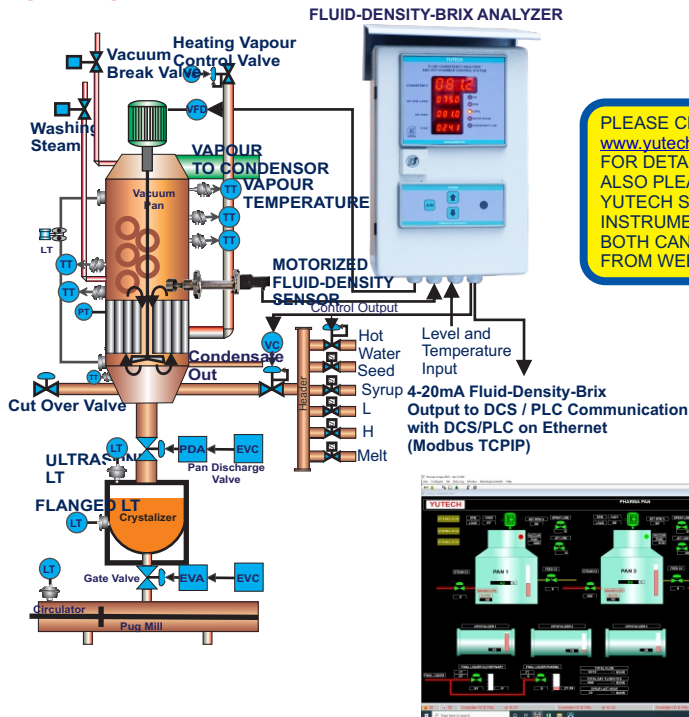
**SCHEMATIC DIAGRAMS:
CONTINUOUS VACUUM PAN AUTOMATION**



**SCREEN SHOT: YUTECH BRX READING
AND CVP COMPARTMENT CONTROL**

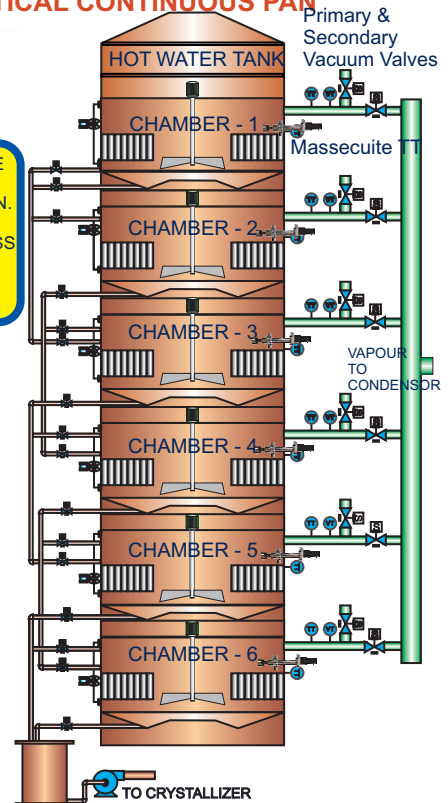


FLUID CONSISTENCY BRIX ANALYZER BASED BATCH PAN AND VERTICAL CONTINUOUS PAN AUTOMATION:

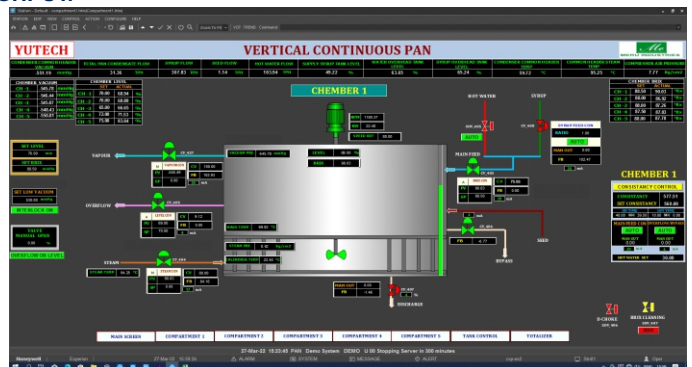
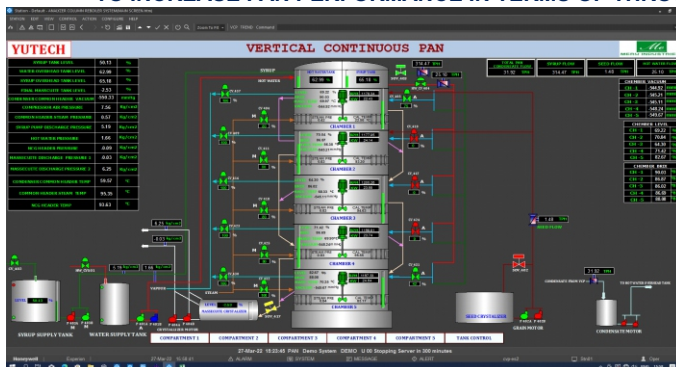


AUTOMATION SCHEMATIC DIAGRAM: BATCH TYPE VACUUM PAN CONVENTIONAL AND WITH STIRRER USING YUTECH FLUID CONSISTENCY BRIX ANALYZER AND YUTECH PAN-CON ALGORITHM.

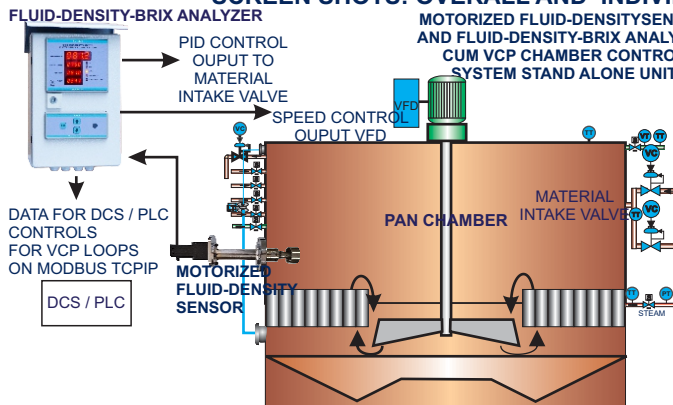
WE ALSO RETROFIT STIRRER ON EXISTING BATCH PANS TO INCREASE PAN PERFORMANCE IN TERMS OF THROUGHPUT.



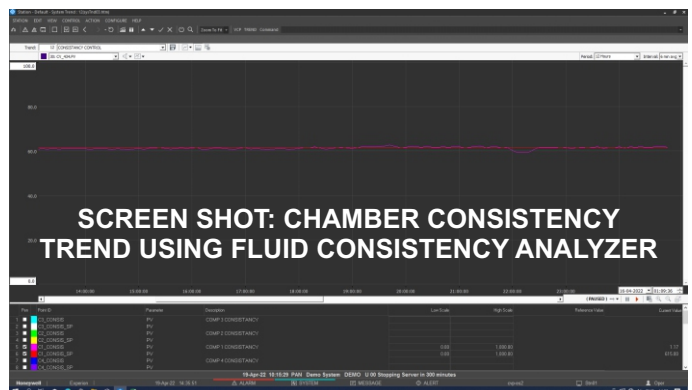
AUTOMATION SCHEMATIC DIAGRAM: VKT OR VERTICAL CONTINUOUS VACUUM PAN USING YUTECH FLUID CONSISTENCY BRIX ANALYZER AND YUTECH VCP ALGORITHM



SCREEN SHOTS: OVERALL AND INDIVIDUAL PAN CHAMBER AUTOMATION IN VCVP

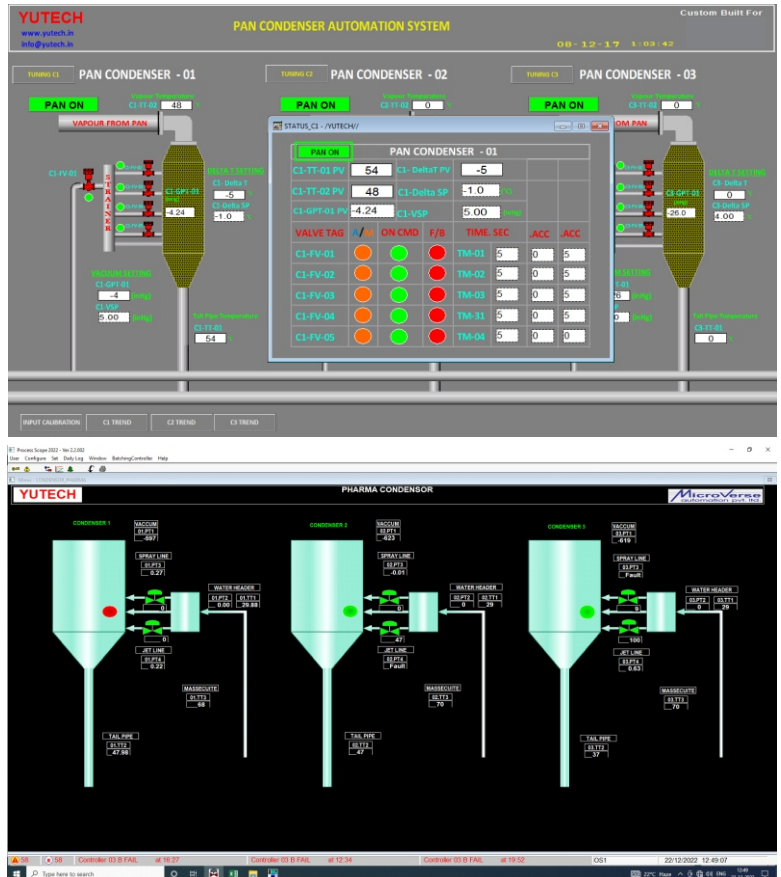
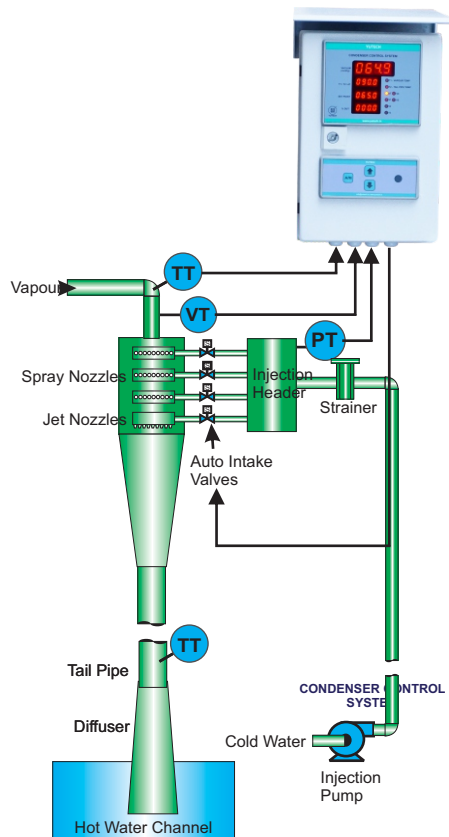


SCHEMATIC DIAGRAM: INDIVIDUAL PAN CHAMBER CONTROL USING YUTECH FLUID CONSISTENCY ANALYZER



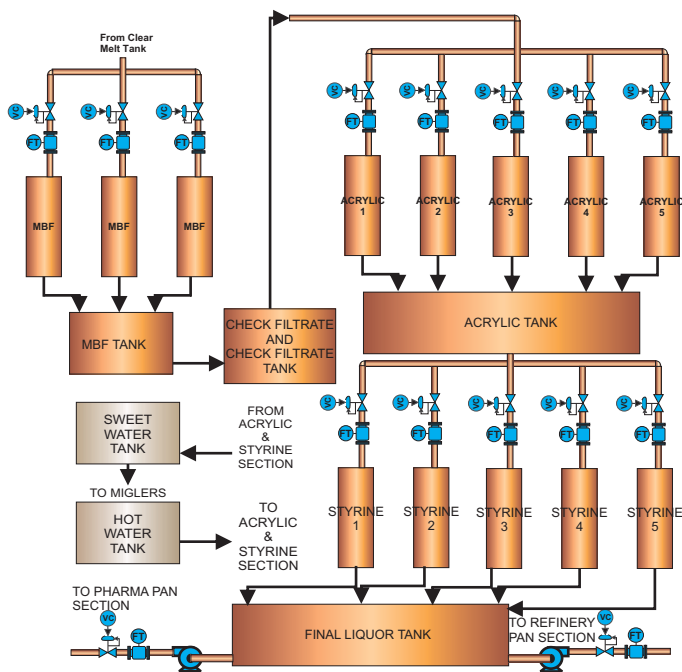


CONDENSER AUTOMATION:



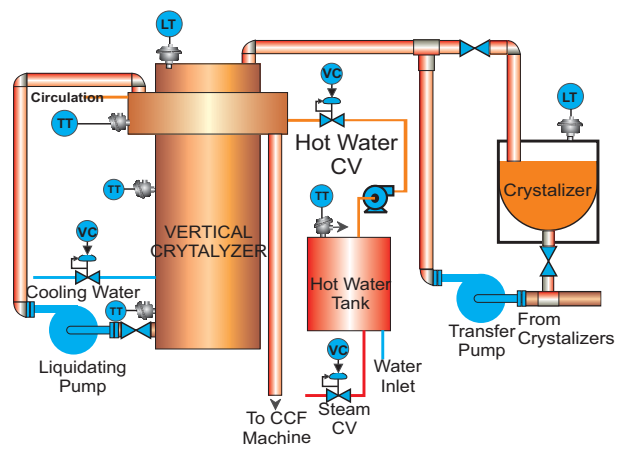
**SCHEMATIC DIAGRAM SCADA AND HMI SCREEN SHOT:
AUTOMATIC MULTIPLE ENTRY CONDENSER SYSTEM**

MELT FILTRATION AUTOMATION:



**SCHEMATIC DIAGRAM:
AUTOMATION OF MELT FILTRATION FOR
PHARMA GRADE AND REFINED SUGAR**

VERTICAL CRYSTALLIZER AUTOMATION:



**SCHEMATIC DIAGRAM:
VERTICAL CRYSTALLIZER AUTOMATION**



**YUTECH SUGAR PROCESS AND REFINERY
AUTOMATION**

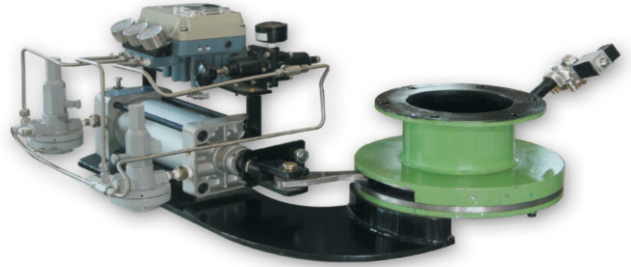
YUTECH

YUTECH

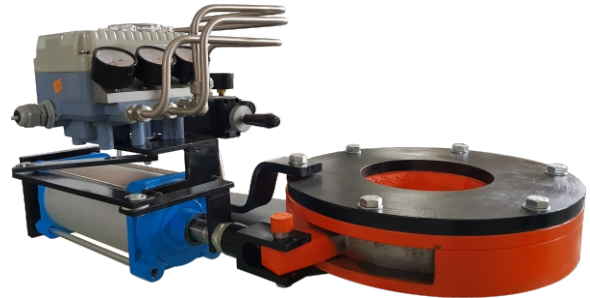
CONTINUOUS CENTRIFUGAL MACHINE AUTOMATION USING CSD OR IRIS VALVE:



**YUTECH CSD Valve also called Iris Valve based
Automatic Feeding of Continuous Centrifugal Machine**



Item Code: YU-CSDV-V02-FL1-6-EPP

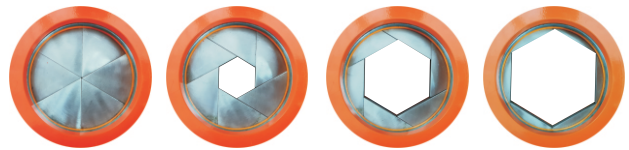


Item Code: YU-CSDV-V03-6-EPP

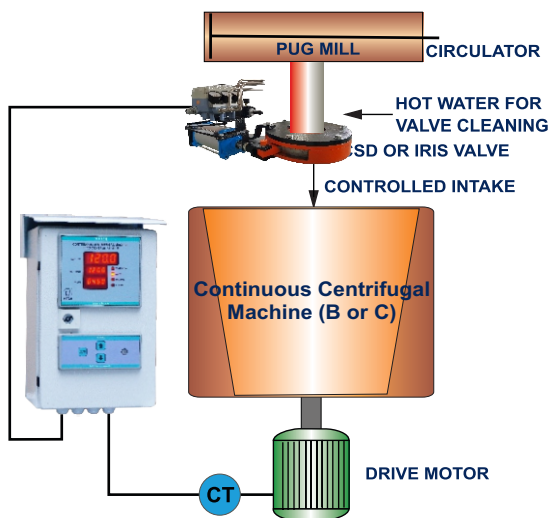


Item Code: YU-CSDV-V03-6

YUTECH CSD Concentric Split Diaphragm



**YUTECH CSD Valve opens through the Centre in
a Hexagonal Shape like an Aperture thus facilitating
perfect Masecuite Entry in the Centre of the
Continuous Centrifugal Machine's Basket**



**SCHEMATIC DIAGRAM OF CONTINUOUS
CENTRIFUGAL MACHINE AUTOMATION**



**CONTINUOUS CENTRIFUGAL MACHINE
FEED CONTROLLER**



POWER PLANT AUTOMATION:

YUTECH has successfully executed many complete Power Plant Automation Projects based on various PLC and DCS Platforms.

Boiler Automation Features that Ensure Higher Efficiency:

Boiler Feed Water and Steam Side Automation:

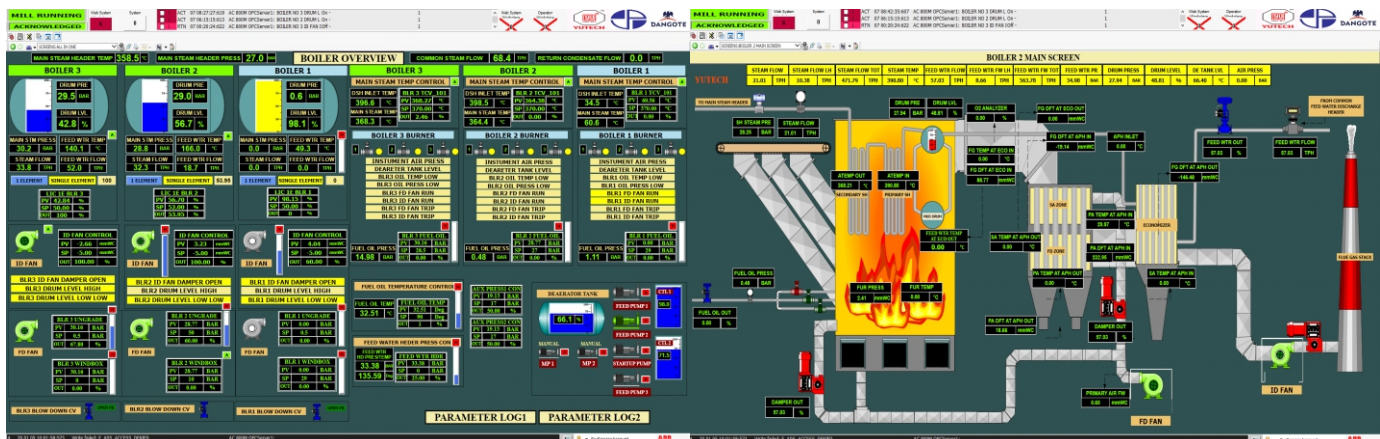
- Consistent FW Temperature due to accurate De-aerator Controls
- Very smooth and finely tuned Three Element Control System ensures balance between Steam Flow, Drum Level and Feed Water Flow
- Pressure & Temperature Compensated Three Element Controls ensure Consistent and Optimum Steam Generation
- Shrink and Swell Compensation in the Drum Level ensures Constant Steam Pressure.
- Multiple Boiler Pressure Compensation ensures all Boilers work at same Pressure with minimal Pressure Difference. This further ensures Constant Desired / Rated Steam Flow as Steam entry into the Header from all Boilers will be at same Pressure.

Boiler Combustion Side Automation:

- Combustion Algorithm directs FD Fan Controls to maintain Consistent Fuel to Air Ratio in accordance with the Steam Pressure thus increased Combustion Efficiency, Optimum FD Fan Speeds also reduce Power Consumption
- This Algorithm also directs ID Fan Controls to work in tandem with FD Fan Speeds and Furnace Pressure to ensure proper Combustion Conditions at all times while Optimum ID Fan Speeds also reduce Power Consumption
- Multiple Boiler Pressure Compensation Loop also works in accordance with this Algorithm to maintain all Boilers at the same Pressure
- Proper Combustion is evident from Reduction in Flue Gas Oxygen Level which means Dangerous CO emissions are reduced.

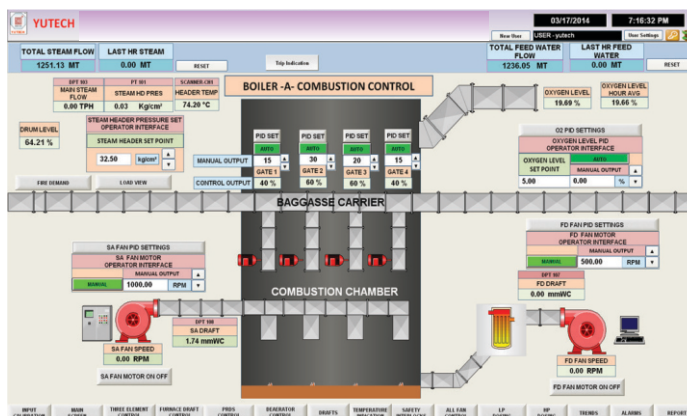
Result of YUTECH Power Plant Automation:

- Improved Overall Boiler Efficiency with Consistent Steam Generation at Constant Pressure and Temperature
- Improved Steam to Fuel Ratio
- Optimum Combustion, Saves Fuel, Reduces Unburnt Carbon Losses and thus Reduces Carbon Footprint
- All Boilers work at the Desired Loads with minimal Steam Pressure Difference thus High Steam Availability
- Consistent Steam ensures Consistent Power Generation

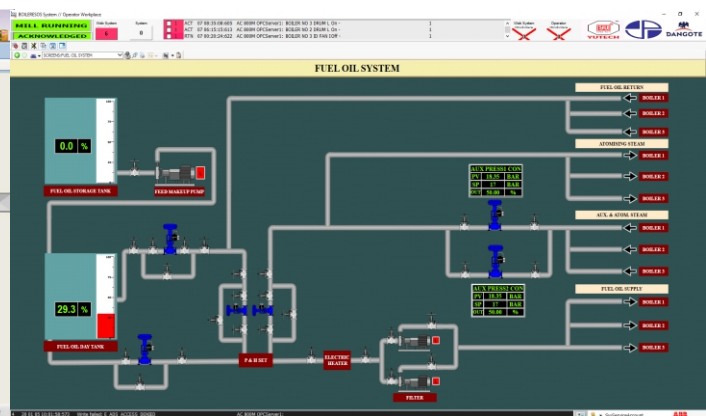


SCREEN SHOT : 3 BOILERS COMMON SCREEN

SCREEN SHOT : BOILER AUTOMATION OVERALL

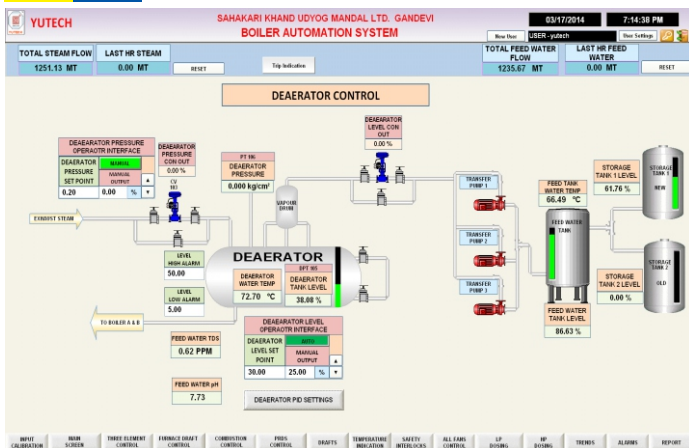


BAGASSE COMBUSTION CONTROL

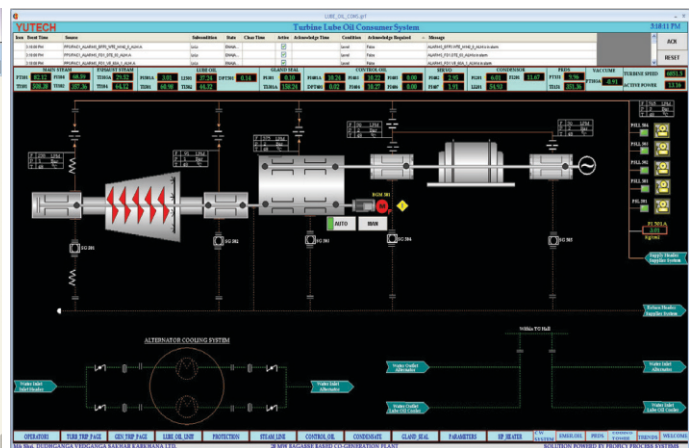


OIL FUEL CONTROLS

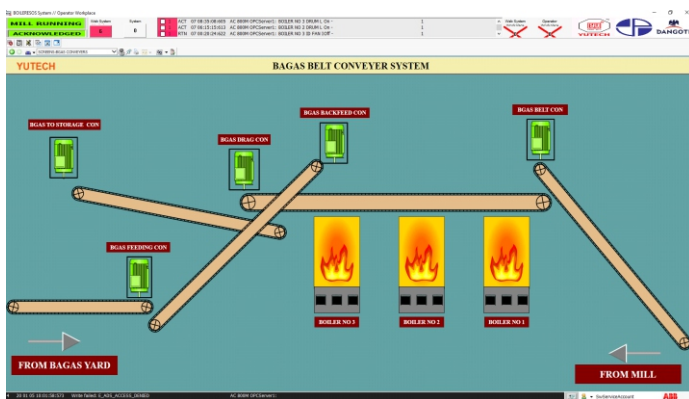
Please refer to our detailed Power Plant Automation Presentation on www.yutech.in; www.yutechautomation.com



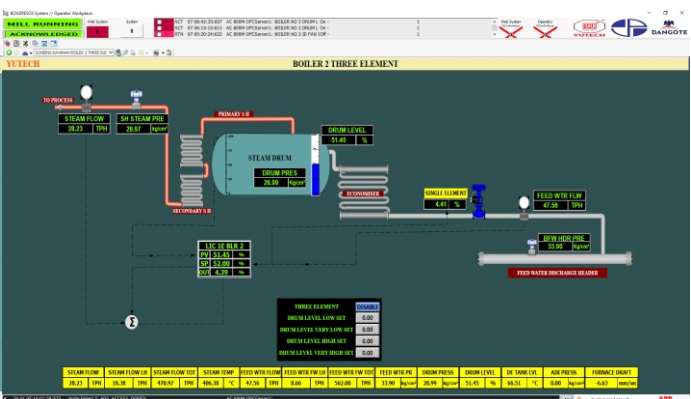
DE AERATOR CONTROL



TURBINE MONITORING



BAGASSE FUEL MANAGEMENT SYSTEM

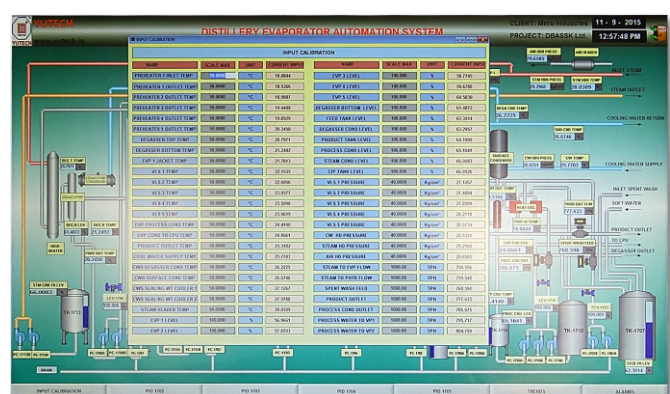
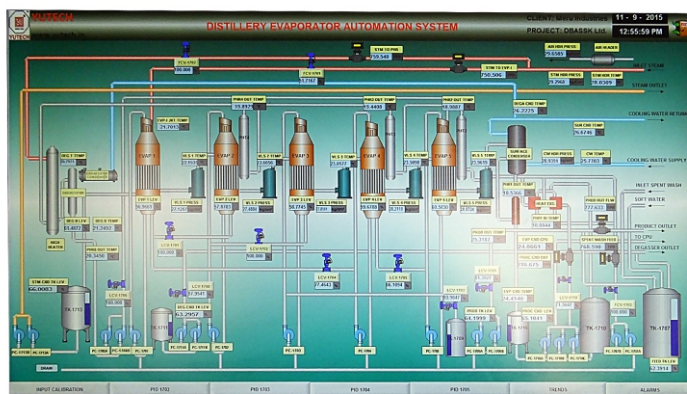


THREE ELEMENT CONTROLS

DISTILLERY AUTOMATION:

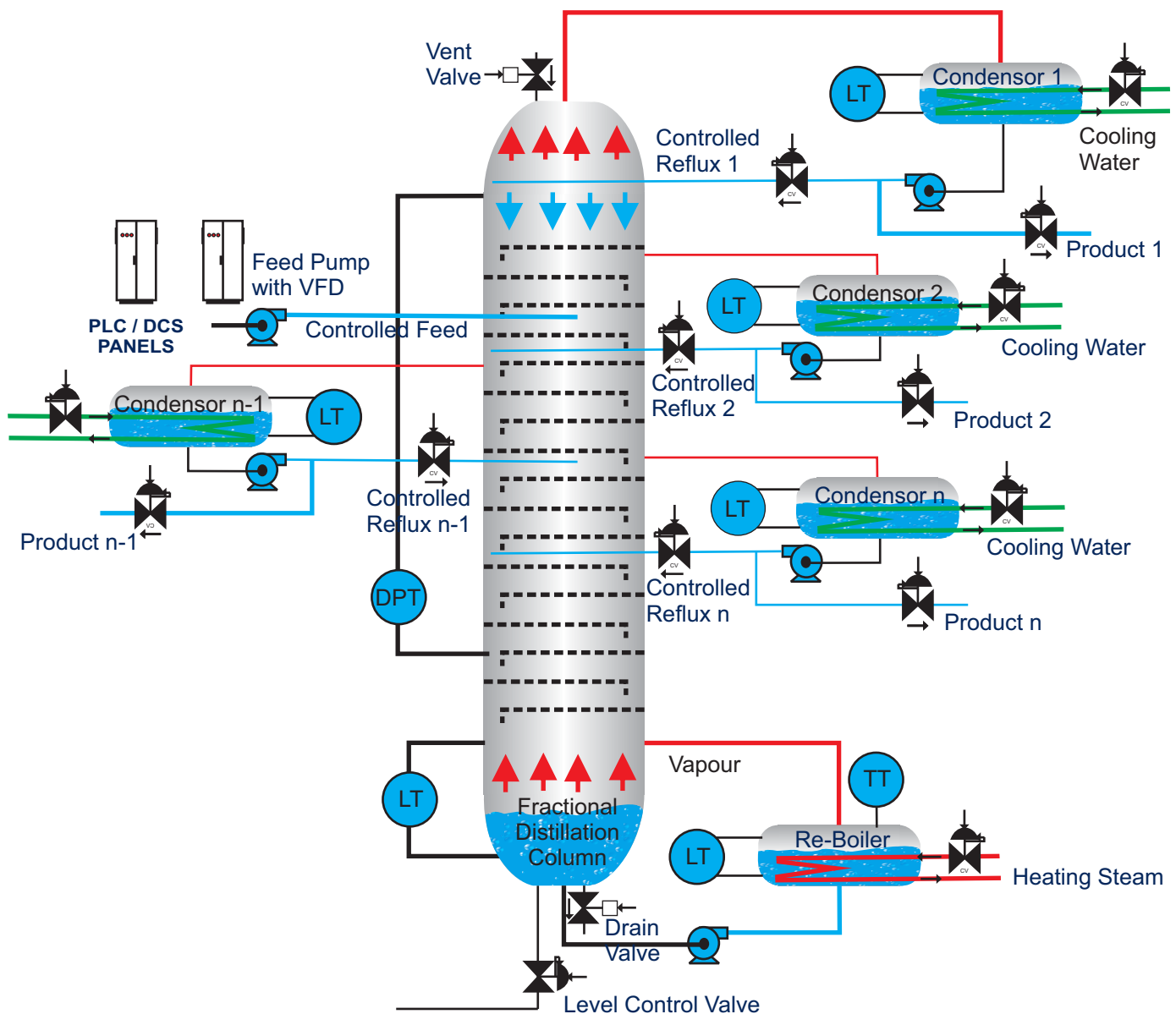
Distillery Automation Ensures Higher Efficiency:

- Distillation Column Automation ensures Correct Heat & Mass Balance thus Constant Distillate Quality Consistently
- Improved Overall Heat Efficiency
- Improved Overall Mass Balance
- Constant Flowrates and Constant Steam and available Heating Media
- Fermentation and Maturation Monitoring with respect to Temperature and Brix improves Process Efficiency and Material Quality
- Distillery Evaporator Automation ensures High Evaporation Efficiency with Trouble-free Process Operations
- Distillation Column Automation ensures Constant Process Parameters Consistently



DISTILLERY EVAPORATOR AUTOMATION OVERALL

Sales: sale@yutech.in, Technical: projects@yutech.in
W: www.yutech.in; www.yutechautomation.com



Schematic Diagram of Distillation Column Automation

Distillery Automation:

- Heating and Level Control in Re-Boiler and Distillation Column
- Level Control in Distillation Column
- Constant Flowrates and Constant Steam mean Constant Process Media and Constant Heating Media hence even heating at all times
- Reflux Control for all Distillates at different heights as per requirement ensures better and efficient Distillation
- Draining and Venting Controls ensure smooth operation
- Controlled Material Intake ensures improved overall process efficiency
- Flow Sensing at various stages
- Level, Pressure and Temperature Sensing in Fermentation Tanks
- Complete Display as Mimic Diagrams in SCADA Screens
- User Friendly Screens for Optimized Controls



THE YUTECH ADVANTAGE - ALL SOLUTIONS UNDER ONE ROOF:

AUTOMATION AND INSTRUMENTATION MANUFACTURE AND SYSTEM INTEGRATION:

- In-House Automation Panel Building and System Integration.
- In-House PLC-SCADA / PLC-HMI / DCS Project and System Design, Engineering, Software Development, Trouble Shooting and Testing.
- Dedicated and Highly Experienced Team of Engineers' for Erection, Commissioning and Servicing of Automation Systems and Instrumentation Systems.
- Dedicated Engineers Team to provide Online Support for Remote Trouble Shooting, Calibration and Fine Tuning
- Technical & Engineering back up for Overseas as well as Domestic Clients.
- Undertaking of Product and Software Designing, Engineering, Development and Implementation
- Undertaking of Project Designing, Engineering, Development, Documentation & Drawings and Implementation
- Undertaking of Project Designing, Engineering, Development, Documentation and Drawings for third parties
- Dedicated Engineers' Team for Automation and Instrumentation Engineering, Design, Drawing & Documentation.

IN-HOUSE INSTRUMENTS, VALVES AND MACHINE MANUFACTURING:

- In-House Electronic Equipment Manufacturing and Testing Facility, where we manufacture Industrial Electronic Analyzers, Instruments, Sugar Mill Process Instruments, Sensors, Controllers and other Electronic Devices.
- In-House Mechanical Facility for Machining, Fitting and Fabrication, where we manufacture CSD or Iris Valves.
- In-house Software Development at all Levels meaning Development in Micro Controller Assembly Language, C, C#.NET, VB.NET, SQL etc for our Electronic Equipment and Machines.
- Dedicated and Highly Experienced Team of Engineers' for Design and Manufacture of Embedded Electronic Systems.
- Dedicated and Highly Experienced Team of Engineers' for Design and Manufacture of Mechanical Equipment and Machines.

IN-HOUSE MACHINE SHOP TO MANUFACTURE MECHANICAL SPARES: (PLEASE SEE OUR SUGAR MILL SPARES BROCHURE)

- CNC and Manual Lathe Machines
- CO₂ Welding Machines
- Shaping and Slotting Machines
- Vertical Milling Centre (VMC)
- Gas Torch Profile Cutting Machine
- CNC Laser Profile Cutting Machine

YUTECH DIVISIONS:

YUTECH is a Brand under the Parent Company **YU Technologies Pvt. Ltd.** Brand **YUTECH** has Sub-Brands under which we Manufacture Diverse Equipment. These sub-brands are also internal Divisions and are separate Profit Centres made to streamline all business activities and to have higher work efficiency across all divisions.

YUTECH INSTRUMENTS - Manufacturer of Instruments, Controllers, Comm and I/O Cards, Sensors & Transmitters, Scanners, Liquid and Metal Analyzers and Galvanic Isolation Products.

YUTECH SUGAR MILL PROCESS INSTRUMENTS - Manufacturer of Instruments and Analyzers for Sugar Factory, Sugar Refinery, Power Plants, Distilleries, Pharmaceutical Plants, Chemical Plants, Food and Beverages Industries, and other Process Plants.

YUTECH FLOW CONTROLS - Manufacturer of Concentric Split Diaphragm also called Iris Valves.

YUTECH AUTOMATION - Designer, Manufacturer, System Integrator, Supplier and Solution Provider of Turnkey Automation Systems. We also provide Documentation, Consultation, Commissioning and After Sale Support & Maintenance Services, we further undertake AMC for Automation and Instrumentation Systems.

YUTECH MACHINES - Manufacturer of Special Purpose Machines and Fabricated & Machined Mechanical Spares.

YUTECH GLOBAL CORP - Distributor and Stockist for various Global Brands.

YU CIRCUITS - Manufacturer of Industrial Electronic Cards and Spares.



INVEST IN **YUTECH** EQUIPMENT
IMPROVE YOUR PROFITS

YUTECH

INVEST IN YUTECH PRODUCTS, AND ENSURE IMPROVED PROFITS:

- Increase, Stabilize and Sustain Consistent Milling or Crushing and Mixed Juice Flow to Process
- Reduce Maintenance Costs, Human Errors and Downtime
- Improve and Sustain Mill Extraction, while Reducing Bagasse POL and Bagasse Moisture
- Improve and Sustain Overall Plant Efficiency and Machine Life Cycle
- Improve and Sustain Sugar Quality, Grain Size and Colour hence better Sugar Price
- Measure Key Performance Indicators and Improve Key Result Area Parameters of all Sugar Milling and Manufacturing Processes through YUTECH Specialized Monitoring and Control Techniques
- Increase Throughput and Production with Same Mechanical Equipment with Improved Quality
- Highest Quality Mechanical Spares Ensure Increased Equipment Life Cycle and Reduced Downtime

TO SUM IT ALL:

SAVE FUEL, STEAM, WATER AND POWER - THUS SAVE MONEY YET INCREASE CARBON CREDITS

IMPROVE AND SUSTAIN PRODUCT QUALITY AND PRODUCTIVITY

THUS INCREASE AND SUSTAIN YEAR ON YEAR REVENUE..... SIMPLY PUT - MAKE MORE MONEY

INVEST IN **YUTECH** EQUIPMENT: **IMPROVE YOUR PROFITS**



Note: YUTECH reserves all rights to make any improvements and/or changes in any product or model as it deems fit from time to time.



YU TECHNOLOGIES PVT. LTD.,

HO & Works: B8/5, Opposite Power Substation,
MIDC-Miraj, 416 410, Distt: Sangli, Maharashtra, India.
T: +91 264 4042; +91 916 832 4851, 911 224 9727 / 8
W: www.yutech.in; www.yutechautomation.com
E: info@yutech.in;
Sales: sale@yutech.in; projects@yutech.in
Tech Support: engineering@yutech.in

Authorized Channel Partner: