

DONNELLY CHUTE LEVEL SENSING AND TRANSMISSION SYSTEM

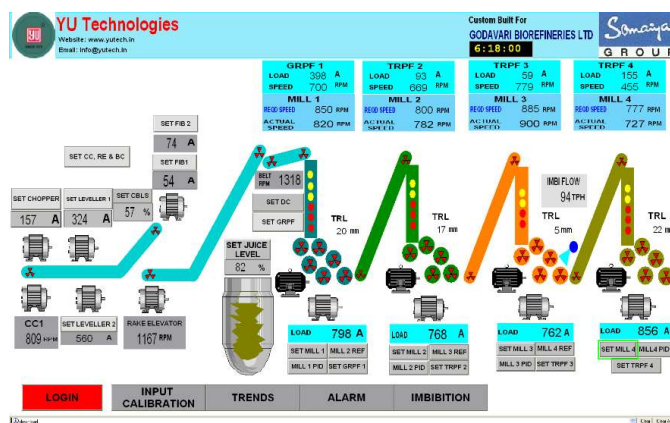
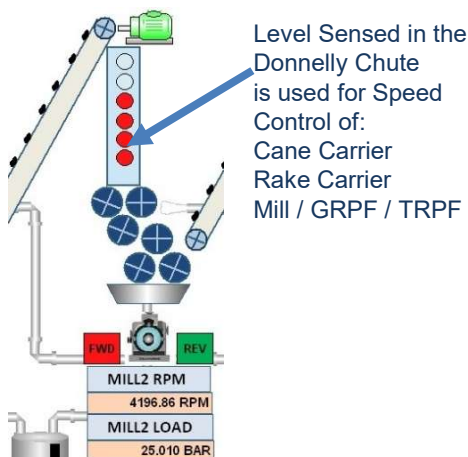
INFRA RED DONNELLY CHUTE LEVEL SENSORS



YUTECH INFRA RED LEVEL SENSORS:

- YUTECH INVENTED THIS TECHNIQUE IN 1986
- 100% TRUE DONNELLY CHUTE LEVEL DETECTION
- NO FALSE INDICATIONS DUE TO BAGASSE POWDER
- NO FALSE INDICATIONS DUE TO CANE PIECES
- NO FALSE INDICATIONS DUE TO JUICE MIST, WATER MIST, STICKY JUICE RESIDUES, JUICE FILMS AND DIRT, BAGASSE POWDER & JUICE MIX FORMED ON THE DONNELLY CHUTE WALLS
- TRUE CHUTE LEVEL DETECTION LEADS TO EXCELLENT CONTROL
- WATER INGRESS AND DIRT PROOF
- YUTECH IR SENSORS HAVE BUILT-IN RAINING BAGASSE COMPENSATION AND EASILY SENSE LEVEL THROUGH RAINING BAGASSE AND JUICE MOISTURE
- INFRA-RED LIGHT IS KNOWN FOR DEEP PENETRATION. IT IS USED IN MILITARY APPLICATIONS FOR NIGHT VISION AND MEDICAL APPLICATIONS LIKE DEEP FOMENTATION HENCE THE CHOICE OF IR FOR THIS CRITICAL APPLICATION.
- 500+ SUGAR MILLS USE YUTECH IR SENSORS IN INDIA, ASIA PACIFIC, AFRICAN REGIONS , USA.

MILL AUTOMATION LIVE SCREENSHOT SHOWING CHUTE LEVEL INDICATION AND LIVE SCREENSHOT:



DONNELLY CHUTE LEVEL SENSING AND TRANSMISSION SYSTEM

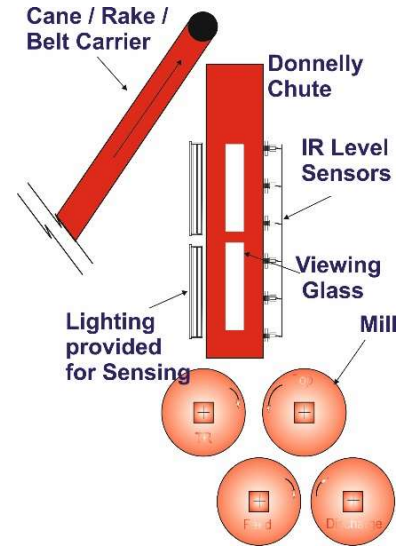
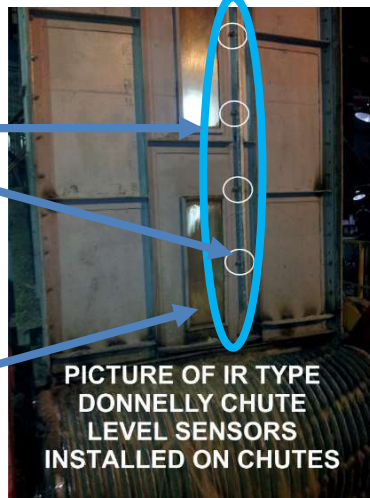
INFRA-RED OR IR DONNELLY CHUTE LEVEL SENSORS



INFRA RED LEVEL SENSOR INSTALLATION ON DONNELLY CHUTE:
SCHEMATIC DIAGRAM AND INSTALLATION PICTURE

Sensor Mounting Plate
welded on the Chute /
Silo. Please see
Operating Instructions
for Installation
Procedure and Guidance.

Proper Donnelly Chute
Level Sensing Results in
Continuous and
Maintained Fuel Feeding
to Mills and avoids
Stoppage due to Chute
overflow



BUILT-IN RAINING BAGASSE COMPENSATION: TO ACCURATELY SENSE, ANALYZE, CALCULATE AND DERIVE ACCURATE CHUTE LEVEL WITHIN A VERY CHALLENGING ENVIRONMENT OF RESIDUAL JUICE DIRT, STICKY BAGASSE DUST AND VIBRATION

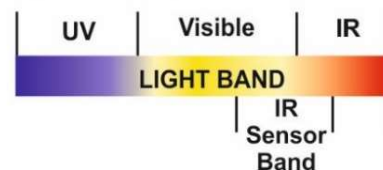
TECHNICAL SPECIFICATIONS FOR DONNELLY CHUTE LEVEL SENSING AND TRANSMISSION SYSTEM :

- **POWER SUPPLY:** 85 - 265 VAC, 50 – 60HZ
- **ANALYZER ENCLOSURE:** IP67 FIELD MOUNTED DUST AND MOISTURE-PROOF
- **INPUT:**
 - IR SENSOR SIGNALS
- **CALIBRATION CAN BE DONE FROM :**
 - **KEYBOARD:** KEYBOARD WITH 5 KEYS IS PROVIDED IN THE ANALYZER
- **DISPLAY:** 4 DIGIT LED DUAL DISPLAY, LED AS PER NUMBER OF LEVELS
- **SIGNAL OUTPUT:**
 - 4 - 20 MA PROCESSED MEASURED OR ANALYZED VARIABLE OUTPUT
 - POTENTIAL-FREE RELAY OUTPUT FOR EACH SENSOR INPUT

PRODUCT CODES FOR DONNELLY CHUTE LEVEL SENSING AND TRANSMISSION SYSTEM OF VARIOUS SENSOR COMBINATIONS ARE GIVEN BELOW:

A15DCAACIR4C1R4FM (4 LEVEL SYSTEM)
A15DCAACIR6C1R6FM (6 LEVEL SYSTEM)
A15DCAACIR8C1R8FM (8 LEVEL SYSTEM)
A15DCAACIR10C1R10FM (10 LEVEL SYSTEM)
A15DCAACIR12C1R12FM (12 LEVEL SYSTEM)
A15DCAACIR16C1R16FM (16 LEVEL SYSTEM)

IR Sensor's Light Sensing Band for IR Type Donnelly Chute Level Sensors



PRODUCT CODES FOR INFRA-RED DONNELLY CHUTE / BAGASSE SILO LEVEL SENSOR:

ASDDCLIRS10: USE FOR CHUTE LEVEL SENSING BEFORE MACERATION WATER IS APPLIED.

ASDDCLIRS12: USE FOR CHUTE LEVEL SENSING AFTER HOT WATER MACERATION IS APPLIED. IT IS THE HIGH-TEMPERATURE VARIANT WHICH CAN WITHSTAND OPERATING TEMPERATURES UP TO 90°C.

PLEASE VISIT OUR WEBSITE www.yutechautomation.com.

YU Technologies Pvt. Ltd.

HO & Works: B 8/5, MIDC, Miraj, 416 410, Distt: Sangli, Maharashtra, India.

T: +91 233 2644042, +91 916 832 4851, +91 916 832 5127 / 8.

E: info@yutech.in; sale@yutech.in

W: www.yutech.in; www.yutechautomation.com

CHANNEL PARTNER: