

# YUTECH INFRA RED LEVEL SENSING AND TRANSMISSION SYSTEM

## FOR BOILER BAGASSE SILO

BASED ON YUTECH'S A15 INTELLIGENT ANALYZERS AND SYSTEMS PLATFORM



**YUTECH**

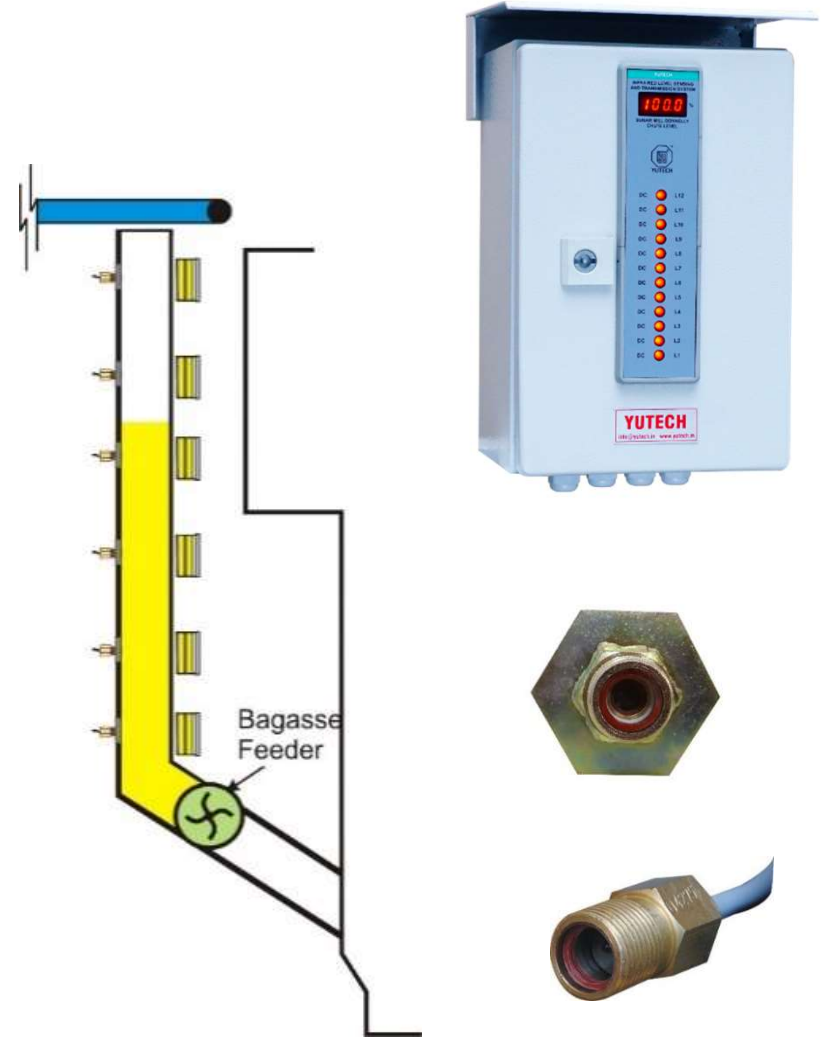


TM

## YUTECH INFRA RED LEVEL SENSING AND TRANSMISSION SYSTEM FOR BAGASSE SILO

**YUTECH**

Servicing the Sugar  
Industry since 1978



## YU Technologies Pvt. Ltd.

HO & Works: B 8/5, MIDC, Miraj, 416 410, Distt: Sangli, Maharashtra, India. T: +91 233 2644042, +91 916 832 4851, +91 916 832 5127 / 8.

E: [info@yutech.in](mailto:info@yutech.in); [sale@yutech.in](mailto:sale@yutech.in) W: [www.yutech.in](http://www.yutech.in); [www.yutechautomation.com](http://www.yutechautomation.com)

[www.yutechautomation.com](http://www.yutechautomation.com); [www.yutech.in](http://www.yutech.in); [sale@yutech.in](mailto:sale@yutech.in)

# YUTECH INFRA RED LEVEL SENSING AND TRANSMISSION SYSTEM

## FOR BOILER BAGASSE SILO

BASED ON YUTECH'S A15 INTELLIGENT ANALYZERS AND SYSTEMS PLATFORM



**YUTECH**

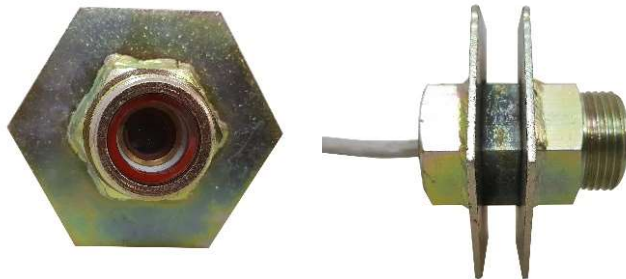
### INFRA RED TYPE LEVEL SENSOR FOR BOILER BAGASSE SILO

**Product Code:**

ASDDCLIRS10 or ASDDCLIRS12

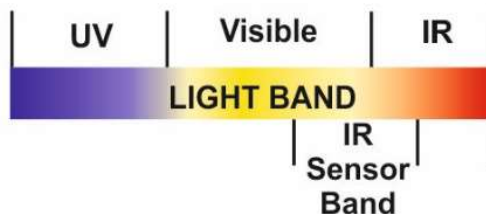


ASDDCLIRS10



ASDDCLIRS12

IR Sensor's Light Sensing Band for  
IR Type Donnelly Chute Level Sensors



### YUTECH INFRA RED LEVEL SENSING AND TRANSMISSION SYSTEM FOR BOILER BAGASSE SILO

**Product Code:**

BASE MODEL A15BSAACIR6C1R6FM;

CONTROLLER MODEL: A15BSAACIR6C2R6FMC

CONTROLLER WITH ETHERNET MODEL: A15BSAACIR6C2R6FMCEM (Modbus TCP/IP)



**YUTECH INFRA RED LEVEL SENSORS – FOR SUGAR MILL DONNELLY CHUTE**  
PRODUCT CODE: ASDDCLIRS10 or ASDDCLIRS12



**YUTECH**

**INSTALLATION PICTURE AND SCHEMATIC DIAGRAM**

INFRA RED LEVEL SENSOR INSTALLATION ON  
DONNELLY CHUTE:  
PICTURE

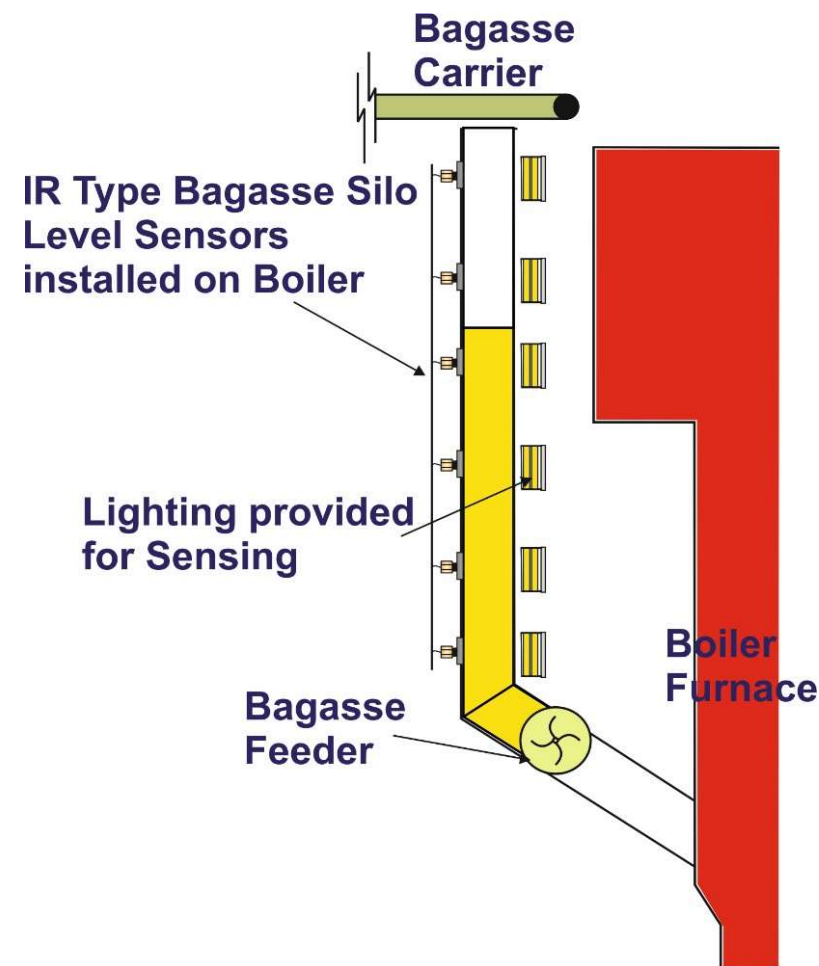
INFRA RED LEVEL SENSOR INSTALLATION ON  
BOILER BAGASSE SILO:  
SCHEMATIC DIAGRAM

Sensor Mounting  
Plate welded on the  
Chute / Silo. Please  
see Operating  
Instructions for  
Installation  
Procedure and  
Guidance.



Proper Bagasse Silo  
Level Sensing Results  
in Continuous and  
Maintained Fuel  
Feeding to Boiler and  
avoids Silo overflow /  
choking

Infra Red Level  
Sensor Installation on  
Donnelly Chute



### YUTECH INFRA RED LEVEL SENSORS:

- YUTECH invented this Technique in 1986
- 100% True Donnelly Chute Level Detection
- No False Indications due to Bagasse Powder
- No False Indications due to Cane Pieces
- No False Indications due to Juice Mist, Water Mist, Sticky Juice Residues, Juice Films and Dirt, Bagasse Powder & Juice Mix formed on the Donnelly Chute Walls
- True Chute Level Detection leads to Excellent Control
- Water Ingress and Dirt Proof
- YUTECH IR Sensors have Built-in Raining Bagasse Compensation and easily Sense Level through Raining Bagasse and Juice Moisture
- Infra Red Light known for Deep Penetration and used in Military Applications for Night Vision, Medical Applications like Deep Fomentation hence the choice of IR for this Critical Application.
- 500+ Sugar Mills use YUTECH IR Sensors in India, Asia Pacific and African Regions
  
- **ASDDCLIRS10:** Use for Level Sensing before Maceration Water is applied.
- **ASDDCLIRS12:** Use for Level Sensing after Maceration Water is applied. It is the High Temperature variant which can withstand Operating Temperatures up to 100-degree C.

### **Innovative Features for Ease of Operation and to save on Installation Cost and Materials:**

- **Built-in Raining Bagasse Compensation:** to Accurately Sense, Analyze, Calculate and Derive Accurate Chute Level within a very challenging environment of Residual Juice Dirt, Sticky Bagasse Dust and Vibration
- **Built-in Controller (Optional):**  
Highly Accurate Fuzzy Logic Controller developed especially for Carrier and Mill Speed Control Applications.
- **Built-in 3-Point Auto/Manual Station to Select Control Output from (Optional):**
  - a. Selector Switch for Local PID Output or DCS/PLC PID Output
  - b. Manual Output for Trouble Shooting

**This feature simplifies installation by eliminating need for installing a Junction Box and Extra wiring.**



### **Innovative Features for Ease of Operation and to save on Installation Cost and Materials:**

- **Built-in Communication Links: See Product Code to select desired protocol Ethernet:**
  - a. Modbus TCP/IP or EtherNet/IP Communication Protocols
  - b. External Controller Calibration Facility from DCS / PLC- SCADA / HMI System via Ethernet. Control Variables can be accessed and changed from DCS / PLC- SCADA / HMI.
  - c. Process Value Data is Communicated for Data Acquisition and Data Storage within DCS / PLC- SCADA / HMI.

**RS485:** Modbus RTU

**USB Communication Facility:** For Calibration from PC or Android using System's USB Port. (This facility is available only with Ethernet Models).

**YUTECH Access App:** Calibration Software can be installed in PC or Android.

### **TECHNICAL SPECIFICATIONS:**

- **Power Supply:** 85 - 265 VAC, 50 – 60Hz
- **Analyzer Enclosure:** IP67 Field Mounted Dust and Moisture Proof
- **Input:**
  - IR Sensor Signals
- **Calibration can be done from :**
  - **Keyboard:** Keyboard with 5 Keys is provided in the Analyzer
  - **USB Port:** for Windows / Android based YUTECH-AccessApp
- **Display:** 4 Digit LED Dual Display, LED
- **Signal Output:**
  - 4 - 20 mA Processed Measured or Analyzed Variable Output
  - 4 - 20 mA Controller Output (Optional)
    - This Output can be Configured as below:
      - PID Output
      - Scaled Output
      - PID / Scaled Output can be selected by C2P or C2S in the Product Code.
  - Potential-Free Relay Output for each Sensor Input
  - Ethernet Communication Protocol: Modbus-TCPIP
    - Modbus TCPIP Communication can be selected by adding suffix EM to the Product Code this is available only in the Controller Model.

# YUTECH INFRA RED TYPE LEVEL SENSING AND TRANSMISSION SYSTEM FOR BOILER BAGASSE SILO: TECHNICAL SPECIFICATIONS



- **Model Selection by Product Code:**
  - Example: A15DCAACIR6C1R6FM (6 Level System)
  - A15BSAACIR6C1R6FM: A15BSA is the Product Category or Platform based Donnelly Chute Level Analyzer
  - A15BSAACIR6C1R6FM: AC means AC Power Supply (85 – 260VAC, 50-60Hz)
  - A15BSAACIR6C1R6FM: IR6 means 6 IR Sensors (number of Sensors can be selected as 4, 6, 8, 10, 12, and 16 Level System)
  - A15BSAACIR6C1R6FM: C1 means 1 Channel 4-20mA Current Output which is the analyzed output of the sensed parameter
  - A15BSAACIR6C1R6FM: R6 means 6 Potential-Free Relay Outputs. Relay Outputs will be as many as the Number of Sensors
  - A15BSAACIR6C1R6FM: FM means Field Mounted Enclosure
  - **Controller Model:**
    - A15BSAACIR6C2R6FMC: C is for Controller AND C2 means 2 Channels of 4-20mA Current Output. 2<sup>nd</sup> Output is Control Output (PID / PI / P)
  - **Controller with Ethernet Model:**
    - A15BSAACIR6C2R6FMC: CEM is for Controller with Ethernet (Modbus TCP/IP)
- **Product Codes for various Sensor Combinations are as below:**
  - A15BSAACIR4C1R4FM (4 Level System)
  - A15BSAACIR6C1R6FM (6 Level System)
  - A15BSAACIR8C1R8FM (8 Level System)
  - A15BSAACIR10C1R10FM (10 Level System)
  - A15BSAACIR12C1R12FM (12 Level System)
  - A15BSAACIR16C1R16FM (16 Level System)



## DCS or PLC Based Turnkey Automations or Standalone Control Systems:

- Complete Sugar Mill Automation with all Loops like Cane Feeding, Mill Speed Controls, Imbibition and Juice Flow Controls etc
- Complete Sugar Process Automation with Loops like Evaporator, Pans, Continuous Pans, Melters Conditioners, Direct Contact Heaters, Condensers etc
- Complete Sugar Refinery / Pharma Grade Sugar Plant Automation with Loops like Pans, Continuous Pans, Melters, Melt Clarifier, Melt Filtration Systems, Direct Contact Heaters, Condensers etc
- Complete Boiler and Power Plant Automation
- Complete Sugar Plant Automation and Instrumentation
- Complete Distillery Automation and Instrumentation
- Complete Process Plant (Pharma / Food Processing / Cement / Steel) Automation and Instrumentation
- VCP / CVP / Batch Pan Automation
- Condenser Automation
- Continuous Centrifugal Machine Automation based on CSD or Iris Valve
- Evaporator and FFE Automation
- Direct Contact Heater Automation
- Vertical Crystallizer
- pH Control System

# YUTECH FLUID-DENSITY-BRIX ANALYZER CUM CONTROL SYSTEM AND MOTORIZED FLUID-DENSITY SENSOR

BASED ON YUTECH'S A15 INTELLIGENT ANALYZERS AND SYSTEMS PLATFORM



**YUTECH**



**FLUID CONSISTENCY-BRIX ANALYZER  
AND CONTROL SYSTEM**

## YUTECH FLUID-DENSITY-BRIX ANALYZER CUM CONTROL SYSTEM

PRODUCT CODE:

ANALYZER MODEL: A15FDAACSCTRC1D4R4FM,

ANALYZER AND CONTROLLER MODEL: A15FDAACSCTRC2D4R4FMC

ANALYZER AND CONTROLLER WITH ETHERNET MODEL:  
A15FDAACSCTRC2D4R4FMCEM (Modbus TCP/IP)

## MOTORIZED FLUID-DENSITY SENSOR

PRODUCT CODE: ASDMFDS24DCC01



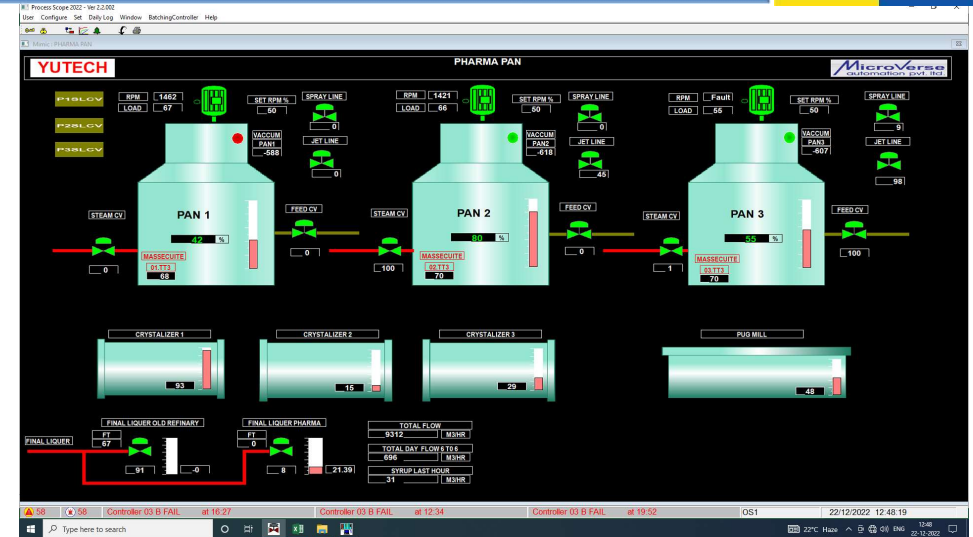
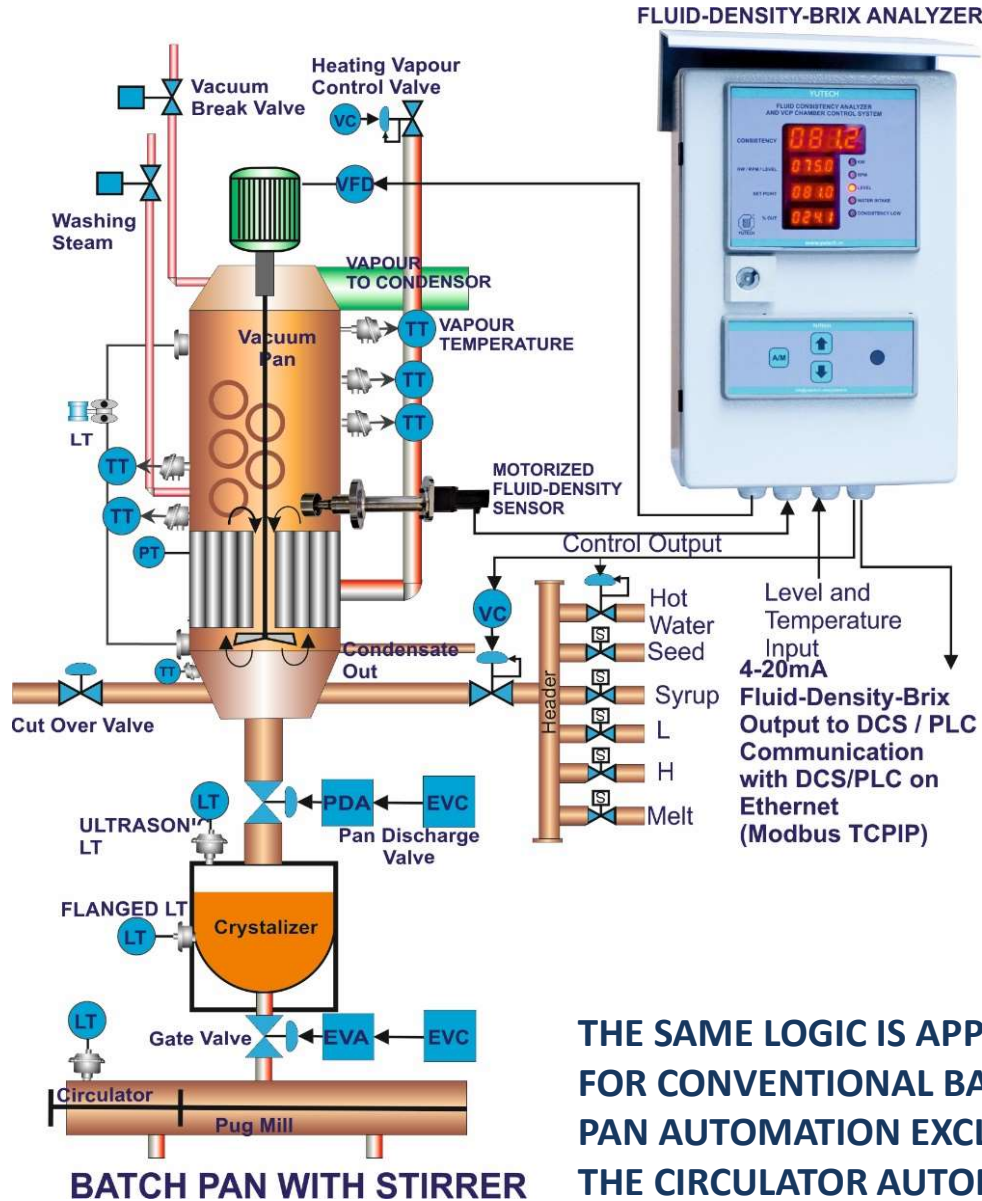
**MOTORIZED FLUID CONSISTENCY SENSOR**

# YUTECH FLUID-DENSITY-BRIX ANALYZER CUM CONTROL SYSTEM AND MOTORIZED FLUID-DENSITY SENSOR

## BATCH PAN AUTOMATION- BATCH PAN CONTROLS SCHEMATIC AND SCREENSHOT



**YUTECH**



### BATCH PAN AUTOMATION:

- FLUID-DENSITY-BRIX SENSING AND MATERIAL / WATER INTAKE CONTROL
- VARIABLE BRIX SET-POINT AS PER PAN LEVEL
- VFD SPEED CONTROL AS PER PAN LEVEL
- TEMPERATURE SENSING THROUGHOUT THE PAN TO ENSURE UNIFORM TEMPERATURE INSIDE PAN BODY
- BATCH COMPLETE INDICATION AND DROP SUGGESTION
- STANDALONE SYSTEM OR PLC / DCS BASED SYSTEM



# YUTECH FLUID-DENSITY-BRIX ANALYZER CUM CONTROL SYSTEM AND MOTORIZED FLUID-DENSITY SENSOR VERTICAL CONTINUOUS PAN AUTOMATION PAN CHAMBER CONTROL SCHEMATIC AND SCREENSHOT

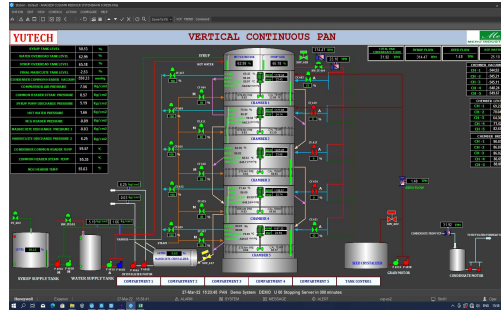


**YUTECH**

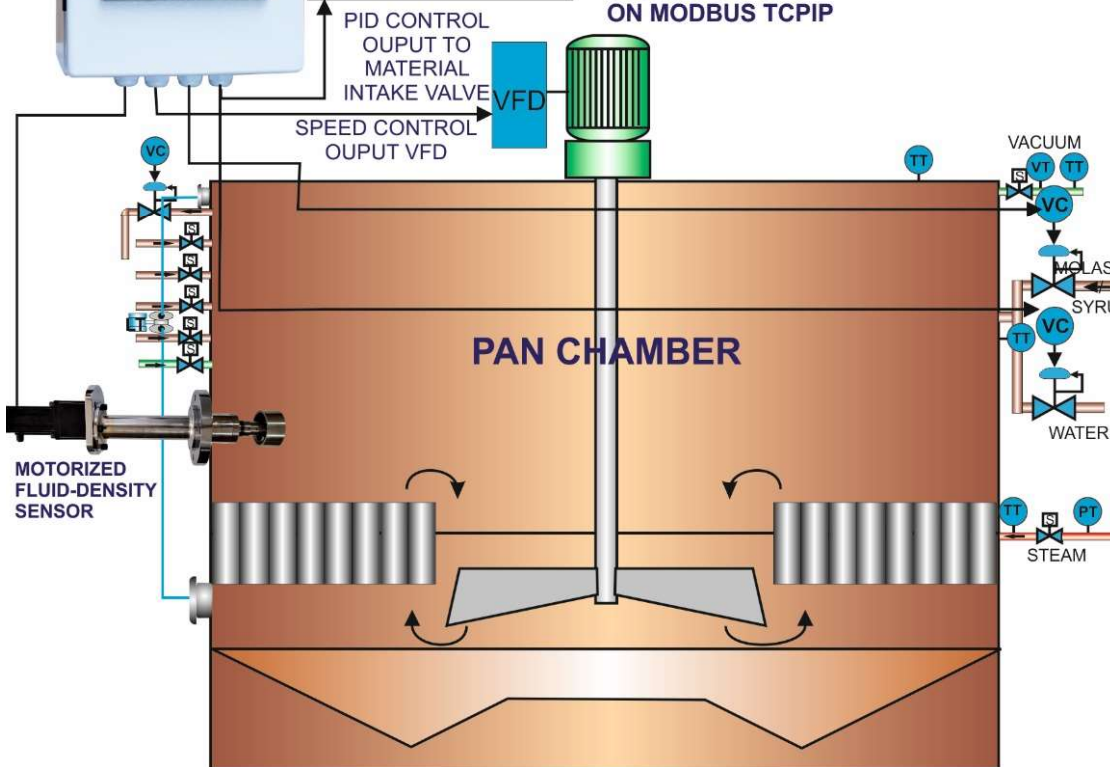
FLUID-DENSITY-BRIX ANALYZER



MOTORIZED FLUID-DENSITY SENSOR AND FLUID-DENSITY-BRIX ANALYZER CUM VCP CHAMBER CONTROL SYSTEM STAND ALONE UNIT

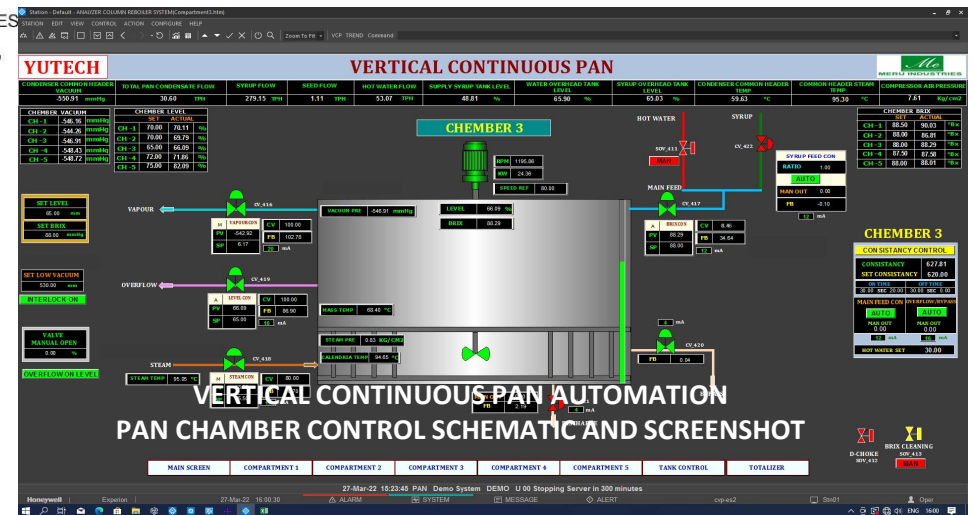


VERTICAL CONTINUOUS PAN AUTOMATION OVERALL SCREENSHOT



## VERTICAL CONTINUOUS PAN AUTOMATION:

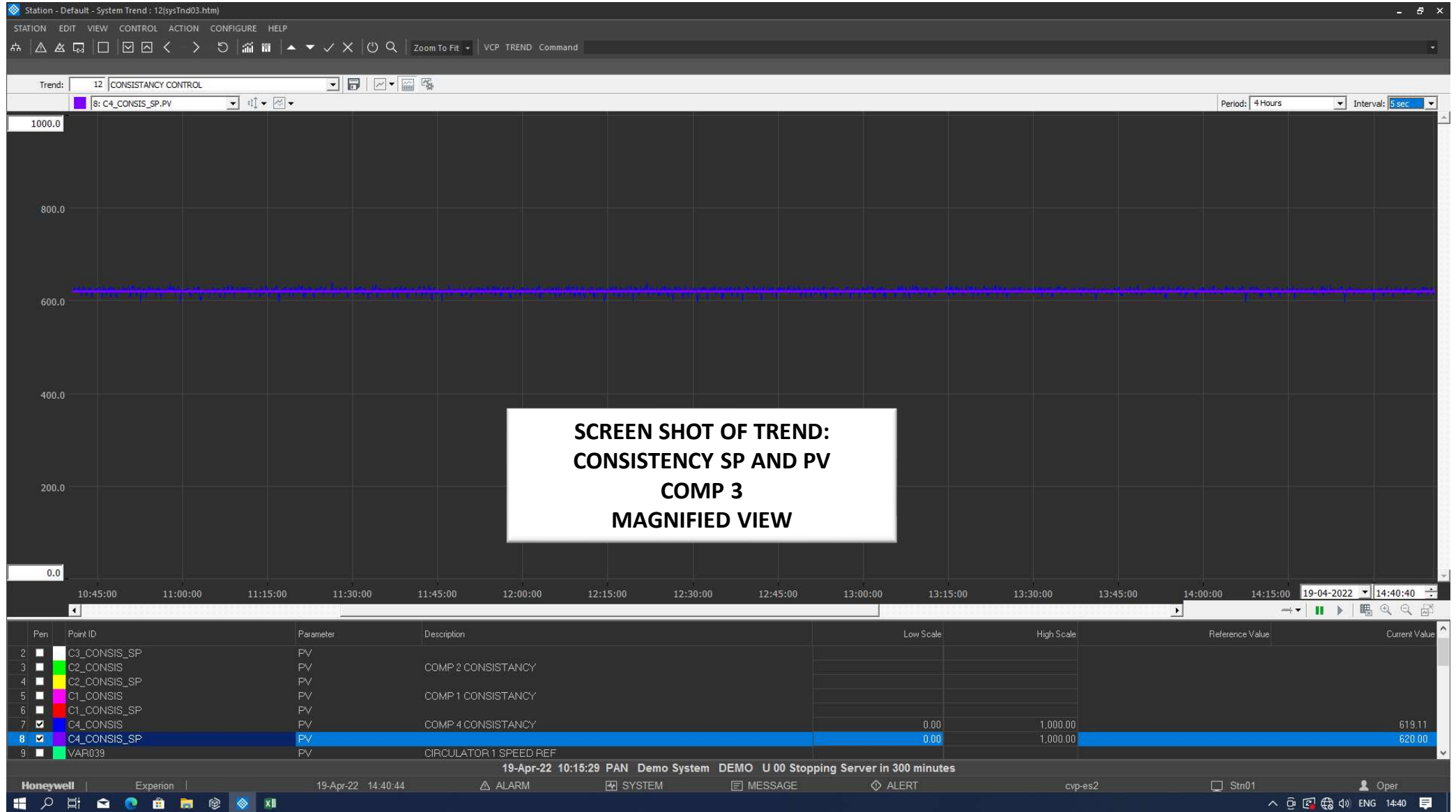
- FLUID-DENSITY-BRIX SENSING AND MATERIAL / WATER INTAKE CONTROL
- VFD SPEED CONTROL AS PER PAN CHAMBER LEVEL
- TEMPERATURE SENSING THROUGHOUT THE PAN CHAMBER TO ENSURE UNIFORM TEMPERATURE INSIDE PAN CHAMBER BODY
- SEMI-AUTOMATIC DROP CONTROL IN ABNORMAL CONDITIONS
- STANDALONE SYSTEM FOR PAN CHAMBER AND COMMUNICATION WITH MAIN VCP PLC / DCS SYSTEM



# YUTECH FLUID-DENSITY-BRIX ANALYZER CUM CONTROL SYSTEM AND MOTORIZED FLUID-DENSITY SENSOR VERTICAL CONTINUOUS PAN AUTOMATION COMPARTMENT PAN BRIX VS BRIX SETPOINT TREND SCREEN SHOT



**YUTECH**





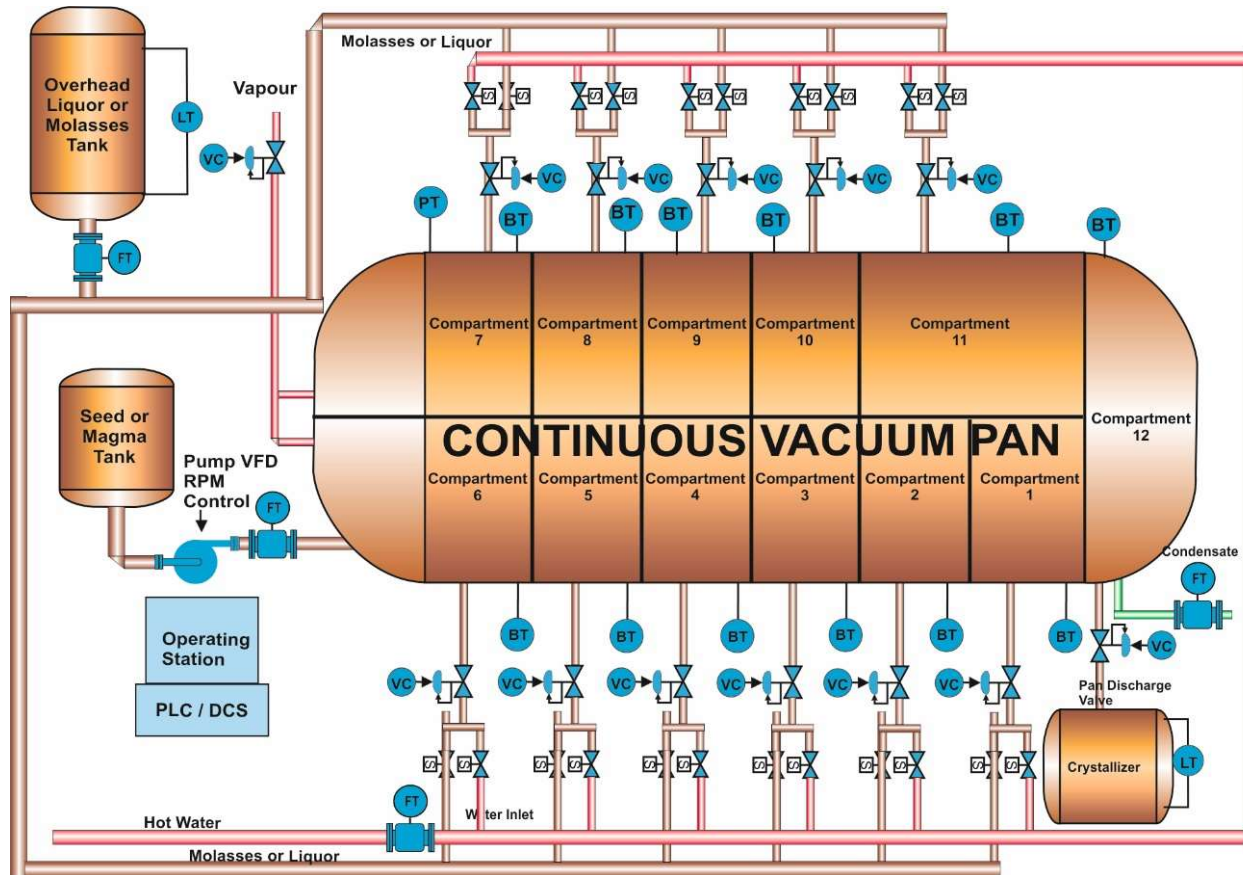
# YUTECH FLUID-DENSITY-BRIX-ANALYZER OR BRIX ANALYZER CUM CONTROL SYSTEM AND MOTORIZED FLUID-DENSITY SENSOR

## CONTINUOUS VACUUM PAN AUTOMATION

### CVP CONTROL SCHEMATIC AND SCREENSHOT



**YUTECH**

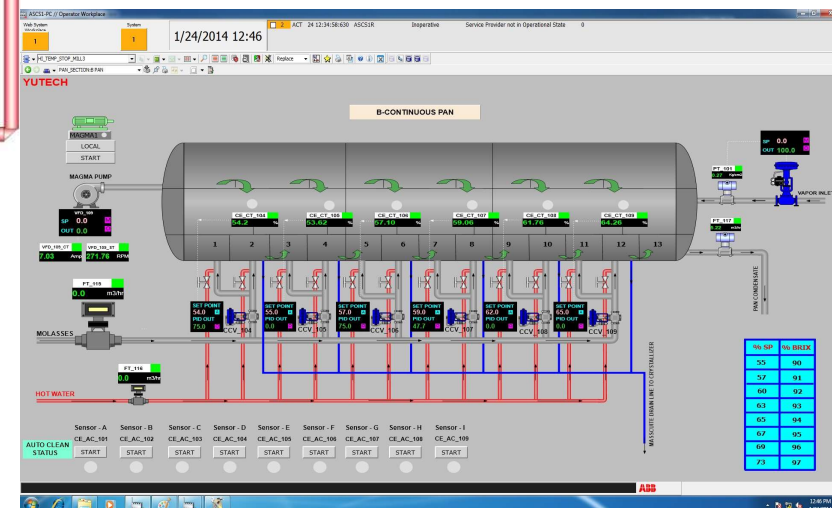


#### VERTICAL CONTINUOUS PAN AUTOMATION:

- YUTECH FLUID-DENSITY-BRIX OR YUTECH BRIX SENSING AND MOLASSES / WATER INTAKE CONTROL FOR EACH COMPARTMENT
- VFD SPEED CONTROL AS PER PAN CHAMBER LEVEL FOR LAST CHAMBER IF INSTALLED
- TEMPERATURE SENSING THROUGHOUT THE PAN CHAMBER TO ENSURE UNIFORM TEMPERATURE INSIDE PAN CHAMBER BODY
- SEED FLOW CONTROL MAINTAINING MOLASSES TO SEED RATIO

#### VERTICAL CONTINUOUS PAN AUTOMATION:

- CALENDRIA VAPOUR PRESSURE CONTROL
- STANDALONE SYSTEM FOR PAN CHAMBER AND COMMUNICATION WITH MAIN VCP PLC / DCS SYSTEM
- SEED OR MAGMA FLOW CONTROL WITH RESPECT TO MOLASSES OR LIQUOR FLOW



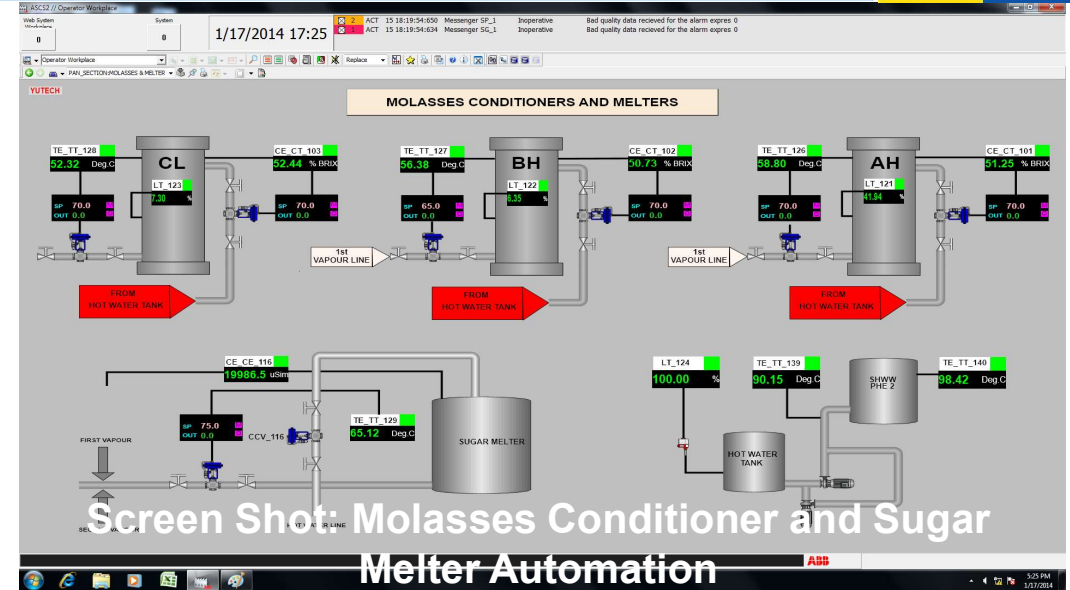
# YUTECH FLUID-DENSITY-BRIX ANALYZER OR BRIX ANALYZER CUM CONTROL SYSTEM AND MOTORIZED FLUID-DENSITY SENSOR

## SUGAR MELTER AND MOLASSES CONDITIONER AUTOMATION

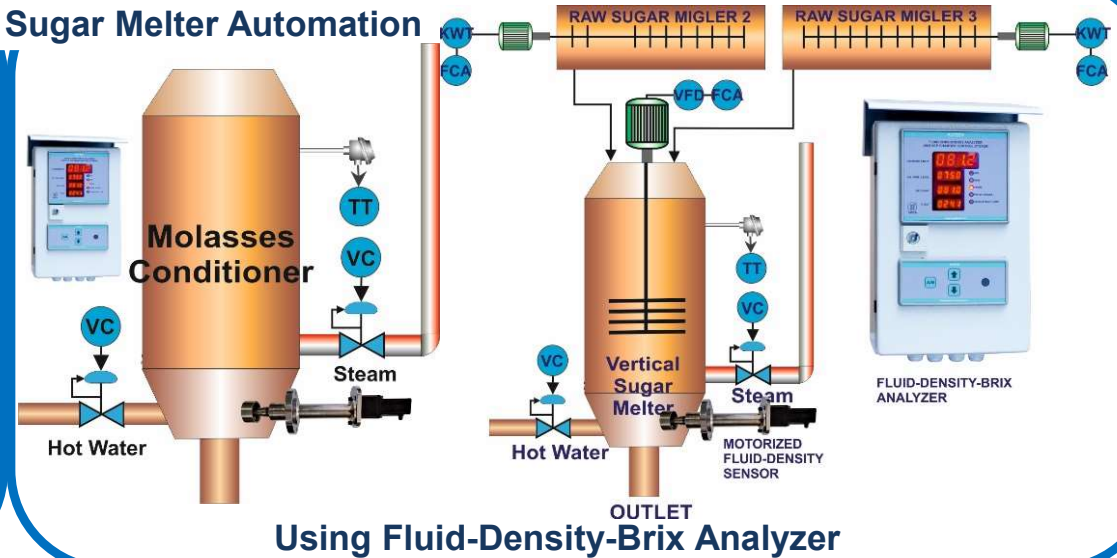
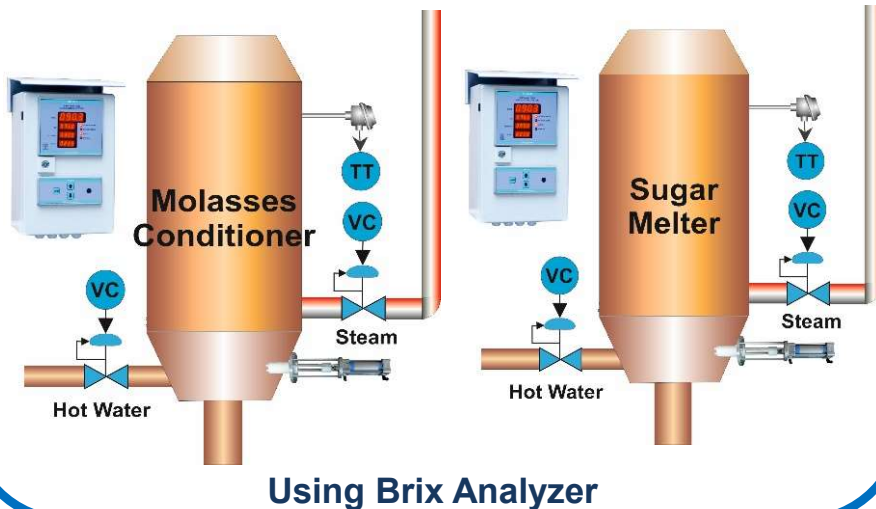
### SCREENSHOT, FIELD MOUNTING PICTURE, AND SCHEMATIC



**YUTECH**



#### Schematic Diagrams: Molasses Conditioner and Sugar Melter Automation



# YUTECH BRIX ANALYZER AND AUTO CLEANING SELF RETRACTABLE BRIX SENSOR BASED ON YUTECH'S A15 INTELLIGENT ANALYZERS AND SYSTEMS PLATFORM



**YUTECH**



**A15BAACBSRC1D4R2FM1**

## BRIX ANALYZER

PRODUCT CODE:

BASE MODELS: A15BAACBSRC1D4R2FM,  
CONTROLLER MODEL: A15BAACBSRC2D4R4FMC  
CONTROLLER WITH ETHERNET MODEL:  
A15BAACBSRC2D4R4FMCEM (Modbus TCP/IP)

## AUTO-RETRACTABLE SELF-CLEANING BRIX SENSOR

PRODUCT CODE:  
ASDBSRSCW1EV03



**A15BAACBSRC2D4R2FM1EM**



**ELECTRODE IN SENSING POSITION**



**ELECTRODE IN CLEANING POSITION**



# pH ANALYZER AND CONTROL SYSTEM

BASED ON YUTECH'S A15 INTELLIGENT ANALYZERS AND SYSTEMS PLATFORM



**YUTECH**



**pH ANALYZER**

## pH ANALYZER AND CONTROL SYSTEM

PRODUCT CODE:

ANALYZER MODEL: A15PHAACPETRC1D4R4FM,

ANALYZER AND CONTROLLER MODEL:

A15PHAACPETRC2D4R4FMC

ANALYZER AND CONTROLLER WITH ETHERNET MODEL:

A15PHAACPETRC2D4R4FMC

EM (Modbus TCP/IP)



**pH ANALYZER AND CONTROL SYSTEM**

# CSD OR IRIS VALVE BASED CONTINUOUS CENTRIFUGAL MACHINE FEED AUTOMATION SYSTEM



**YUTECH**

## CONTINUOUS CENTRIFUGAL MACHINE AUTOMATIC FEED CONTROL SYSTEM

PRODUCT CODE:

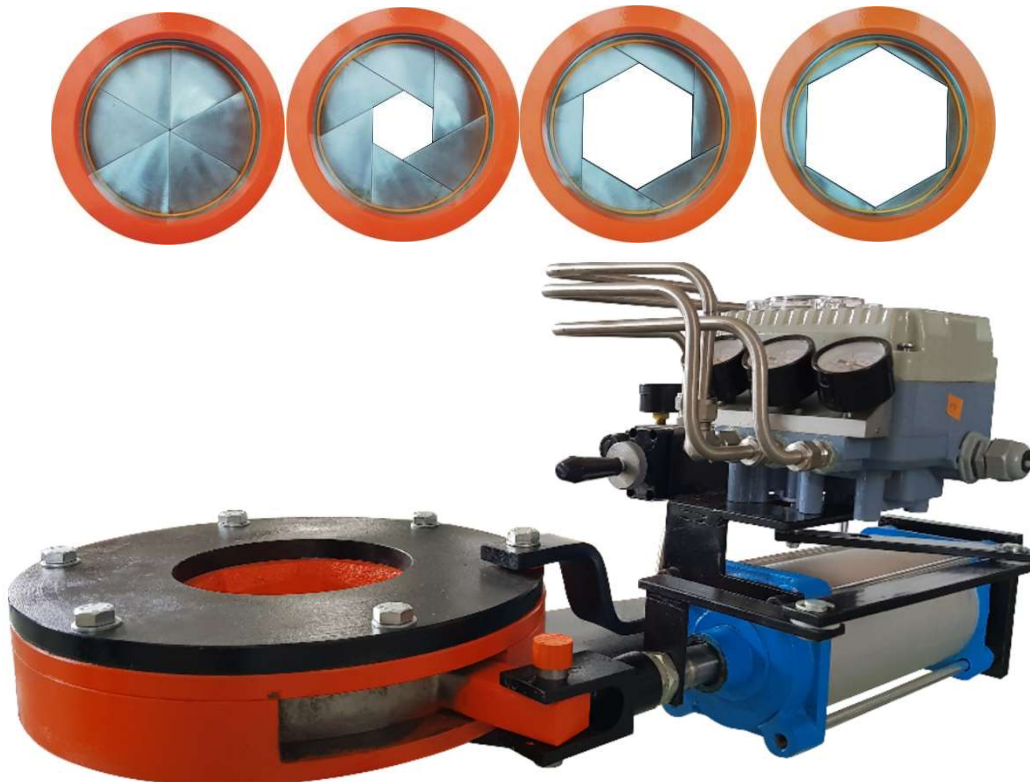
CONTROLLER MODEL: A15CCMAACCTC1C2D4R4FMC

CONTROLLER WITH ETHERNET: MODELA15CCMAACCTC1C2D4R4FMCEM (Modbus TCP/IP)

CONCENTRIC SPLIT DIAPHRAGM (CSD) CONTROL VALVE ALSO CALLED IRIS TYPE VALVE: PRODUCT CODE: C15CSDV3D6EP



CONTINUOUS CENTRIFUGAL MACHINE AUTOMATIC FEED CONTROL SYSTEM



CSD OR IRIS VALVE



# YUTECH CONDENSER CONTROL SYSTEM FOR PANS AND EVAPORATORS

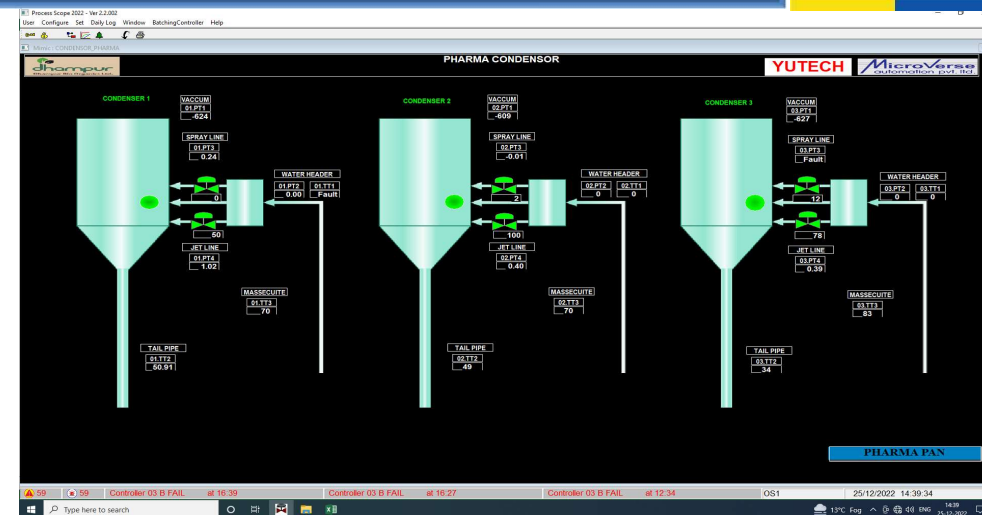
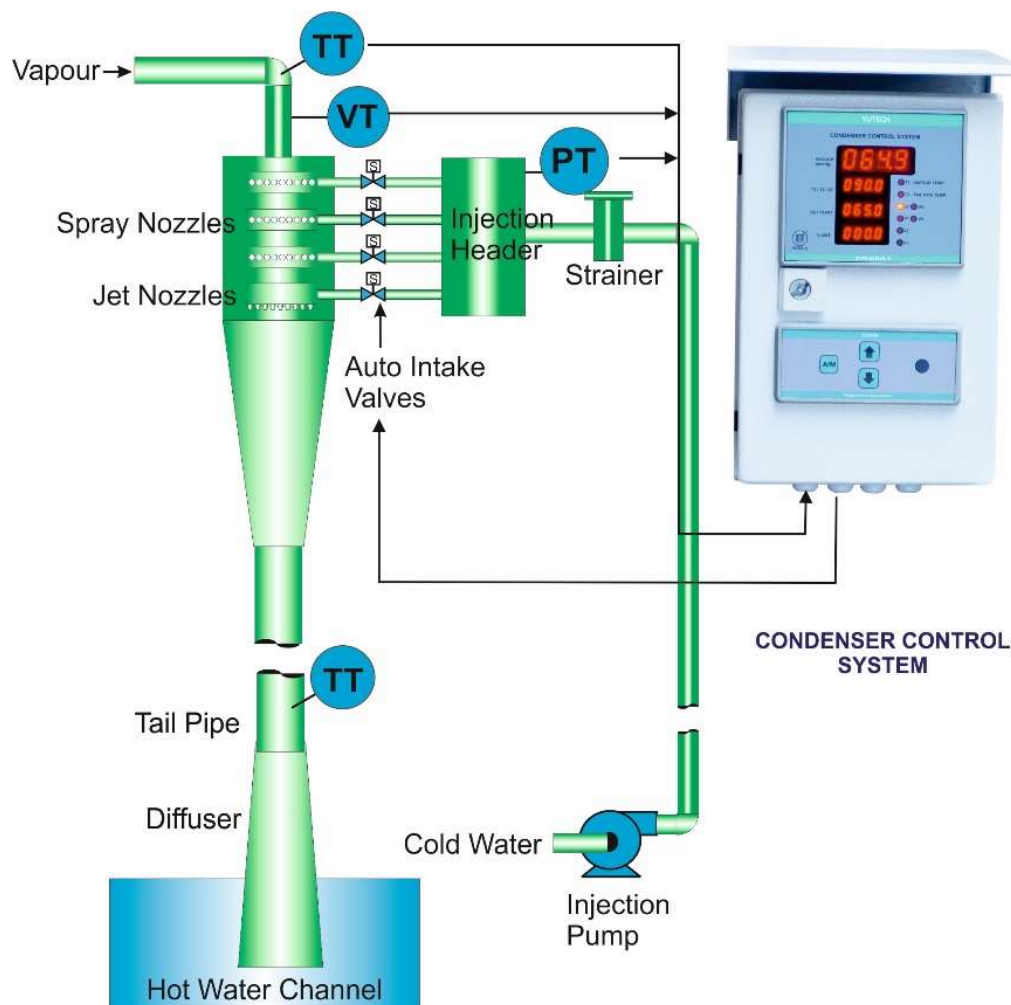
SCHEMATIC DIAGRAM: CONDENSER AUTOMATION USING YUTECH CONDENSER CONTROLLER

SCREEN SHOT: CONDENSER CONTROL SYSTEM IMPLEMENTED USING DCS / PLC



YUTECH

## SCHEMATIC DIAGRAM AND SCREENSHOT: CONDENSER CONTROL



### CONDENSER AUTOMATION:

- Vapour Vacuum and Temperature sensed
- Tail Pipe Condensate Temperature Sensed in Tail Pipe
- Temperature Difference Calculated
- Spray Jet Water Quantity is Automatically Controlled wrt Remote Set Point generated by Vacuum and Temperature difference.
- Number of Jets & Nozzles and Jet & Nozzle Diameters designed as per Condenser Capacity
- Control Valve is used to control Spray Jets in case of Single Entry Condenser.
- Water Pressure in the Common Injection Header maintained by Controlling Injection Pump VFD
- Jet Compartment Controlled by Separate Valve

## **YUTECH'S INTELLIGENT A15 PLATFORM BASED ANALYZERS AND SYSTEMS:**

**INTELLIGENT & VERY POWERFUL, A15 PLATFORM HAS ANALYTICAL AND HIGHER I/O HANDLING ABILITY WITH COMMUNICATION FACILITY FOR ETHERNET AND WIRELESS PROTOCOLS**



### **FIELD MOUNTED ANALYZERS AND CONTROL SYSTEMS FOR PROCESS, PHARMA, DAIRY AND SUGAR INDUSTRY:**

#### **SUGAR PROCESS ANALYZERS AND CONTROLS:**

- **HIGH FREQUENCY BRIX ANALYZER AND BRIX ANALYZER AND AUTO-RETRACTABLE SELF-CLEANING BRIX SENSOR**
- **FLUID-DENSITY-BRIX ANALYZER CUM CONTROL SYSTEM AND MOTORIZED FLUID DENSITY SENSOR**
- **CONDUCTIVITY ANALYZER**
- **PH ANALYZER**
- **CONTINUOUS CENTRIFUGAL MACHINE AUTOMATION SYSTEM USING CONCENTRIC SPLIT DIAPHRAGM CONTROL VALVE ALSO CALLED IRIS VALVE.**
- **CONDENSER CONTROL SYSTEM: MULTIPLE OR SINGLE WATER SPRAY AND JET ENTRY CONDENSER CONTROLS.**

#### **SUGAR MILL AND BOILER ANALYZERS AND CONTROLS:**

- **INFRA RED TYPE LEVEL SENSING AND TRANSMISSION SYSTEM: SUGAR MILL DONNELLY CHUTES.**
- **INFRA RED TYPE LEVEL SENSING AND TRANSMISSION SYSTEM: BOILER BAGASSE SILOS OR CHUTES.**
- **CAPACITIVE TYPE LEVEL SENSING AND TRANSMISSION SYSTEM: SUGAR MILL DONNELLY CHUTES.**

#### **DATA ACQUISITION AND COMMUNICATION:**

- **FIELD MOUNTED DATA ACQUISITION AND COMMUNICATION SYSTEM: ETHERNET / WIRELESS COMMUNICATION**
- **IOT FIELD MOUNTED DATA ACQUISITION AND COMMUNICATION SYSTEM: PROCESS DATA TRANSMISSION AND INTERNET COMMUNICATION ON GSM AND WIFI**
- **16 CHANNEL SCANNER WITH MODBUS RTU**
- **16 CHANNEL SCANNER WITH MODBUS TCP/IP**

# YUTECH HALL'S EFFECT TYPE DISPLACEMENT SENSING AND TRANSMISSION SYSTEM

## FOR SUGAR MILL ROLLER LIFT AND CANE BLANKET LEVEL

BASED ON YUTECH'S A12 INTELLIGENT ANALYZERS AND SYSTEMS PLATFORM



**YUTECH**

### HALL'S EFFECT TYPE SENSOR FOR CANE BLANKET LEVEL SENSING

Product Code: ASDCBL1210

### HALL'S EFFECT TYPE SENSOR FOR TOP ROLLER LIFT SENSING

Product Code: ASDTRLS1210

### YUTECH HALL'S EFFECT TYPE DISPLACEMENT SENSING AND TRANSMISSION SYSTEM

Product Code:

CANE BLANKET LEVEL INDICATOR TRANSMITTER: A12DCHTACCBL1210; A12DCHTACCBL2C2R2GFM;

TOP ROLLER LIFT INDICATOR TRANSMITTER: A12DCHTACTRLS1210; A12DCHTACTRLS2C2R2GFM;



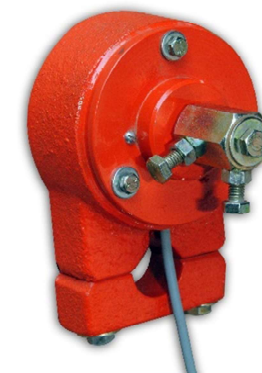
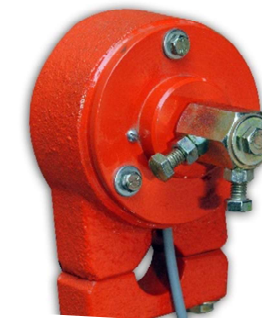
**TOP ROLLER LIFT SENSORS**



**TOP ROLLER LIFT  
INDICATOR CUM  
TRANSMITTER**



**CANE BLANKET LEVEL  
INDICATOR CUM  
TRANSMITTER**



**CANE BLANKET  
LEVEL SENSORS**

## YUTECH'S POWERFUL AND RUGGED A12 PLATFORM BASED INSTRUMENTS:

VERY POWERFUL, A12 PLATFORM HAS DECENT ANALYTICAL ABILITY WITH HIGH-SPEED ETHERNET AND WIRELESS COMMUNICATION PROTOCOLS AND RUGGED FIELD MOUNTED ENCLOSURES



**YUTECH**

### Instruments Specifically Designed and Manufactured for Sugar Mills having IP 67 protection class Enclosures:

- Cane Blanket Level Indicators & Transmitters with Sensor Options of:
  - Hall's Effect Type Sensors
  - Ultrasonic Type Sensors
- Mill Top Roller Lift Indicators & Transmitters with Sensor Options of:
  - Hall's Effect Type Sensors
  - Ultrasonic Type Sensors



### Field Mounted Instruments having IP67 protection class Enclosures for any Process Applications:

- Field Mounted Universal Input Process Indicator & Transmitter with Ethernet / Wireless Communication Facility and 4-20mA Retransmission and 2 Potential-Free Relay Outputs
- Field Mounted Dual Channel Universal Input Process Indicator & Transmitter with Ethernet / Wireless Communication Facility and with two 4-20mA Retransmission and two Potential-Free Relay Outputs
- Field Mounted PID Controller and Time Proportionate PID Controller
- Field Mounted Customized Pre-fed Logic Indicators and Controllers
- Function Display
- Electro-Pneumatic Valve Positioner with Position Feedback
- Field Mounted Auto / Manual Stations with External Pot Facility
- Field Mounted Flow Totalizer





## YUTECH'S A10 PLATFORM BASED INSTRUMENTS:

A10 PLATFORM IS DESIGNED FOR PROCESS INSTRUMENTS, INDICATORS, SCANNERS AND CONTROLLERS WITH HIGH-SPEED COMMUNICATION FACILITY AND PROTOCOL CONVERTERS



**YUTECH**

### GENERAL INSTRUMENTS FOR ANY PROCESS APPLICATIONS:

- Universal Input Process Indicator & Transmitter
- Dual Channel Universal Input Process Indicator & Transmitter
- PID Controller
- Time Proportionate PID Controller
- Universal Input Jumbo Displays of Digit Sizes from 1" to 12"
- Universal Input Jumbo Displays of Digit Sizes from 1" to 12" with 4-20mA Retransmission and 2 Potential-Free Relay Outputs
- Modbus RTU Input Jumbo Displays of Digit Sizes from 1" to 12"
- Special Machine Controllers customized for YUTECH Machines
- Auto / Manual Stations with External Pot Facility
- 8 AND 16 Channel Scanner



### I/O AND PROTOCOL CONVERTER PRODUCTS:

- Universal Input Process Indicator with Modbus RTU, 4-20mA Retransmission and 2 Potential-Free Relay Outputs
- 8 Channel Universal Input Card with Modbus RTU Communication
- 8 Channel Universal Input Card with Wireless Communication
- Wireless to Ethernet Protocol Converter
- Modbus RTU to Modbus TCP/IP Serial to Ethernet Protocol Converter
- EtherNetIP TO Modbus TCP/IP Protocol Converter





**YUTECH**

**YUTECH SUGAR MILL PROCESS INSTRUMENTS**

MEASURING SUGARS BRIX BY BRIX

**YUTECH FLOW CONTROLS**

CONTROL SAVE EARN

**YUTECH AUTOMATION**

THE SWEETENER TO SUCCESS

**YUTECH INSTRUMENTS**

ANALYZE TRANSMIT CONTROL COMMUNICATE



**FACTORY OWNERS'  
PEACE OF MIND**

**SAVE FUEL, REDUCE CARBON FOOTPRINT,  
MAKE THE WORLD GREENER  
AND YET, MAKE MONEY**

**THANK YOU**

[www.yutechautomation.com](http://www.yutechautomation.com); [www.yutech.in](http://www.yutech.in); [sale@yutech.in](mailto:sale@yutech.in)