

BOILER BAGASSE SILO LEVEL SENSING AND TRANSMISSION SYSTEM INFRA-RED OR IR BAGASSE SILO LEVEL SENSORS

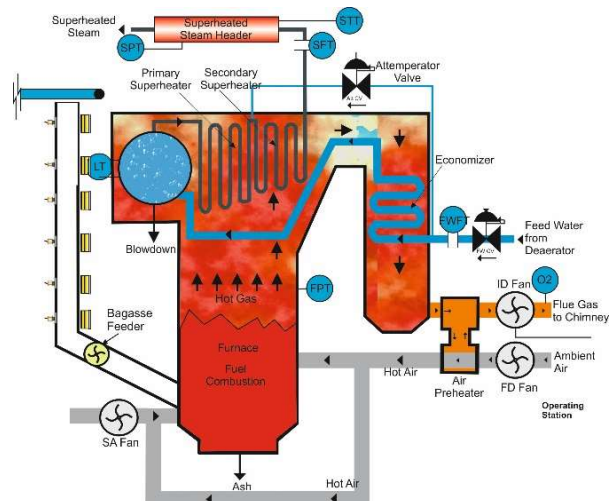
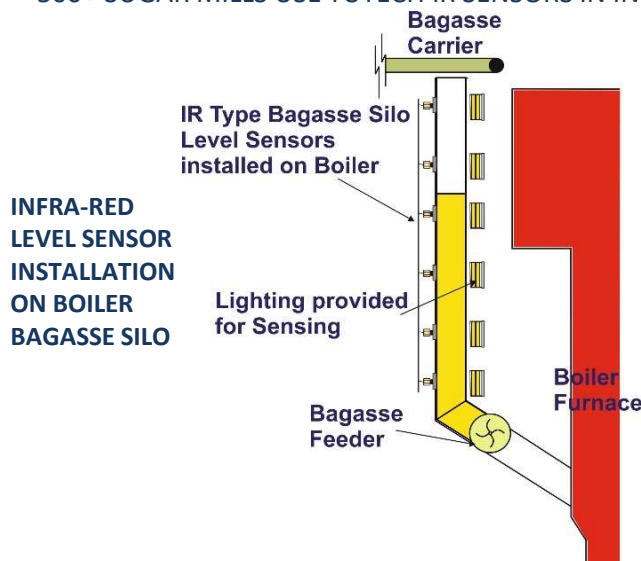


ASDDCLIRS12



YUTECH INFRA RED LEVEL SENSORS:

- YUTECH INVENTED THIS TECHNIQUE IN 1986
- 100% TRUE DONNELLY CHUTE LEVEL DETECTION
- NO FALSE INDICATIONS DUE TO BAGASSE POWDER
- NO FALSE INDICATIONS DUE TO CANE PIECES
- NO FALSE INDICATIONS DUE TO JUICE MIST, WATER MIST, STICKY JUICE RESIDUES, JUICE FILMS AND DIRT, BAGASSE POWDER & JUICE MIX FORMED ON THE DONNELLY CHUTE WALLS
- TRUE CHUTE LEVEL DETECTION LEADS TO EXCELLENT CONTROL
- WATER INGRESS AND DIRT PROOF
- YUTECH IR SENSORS HAVE BUILT-IN RAINING BAGASSE COMPENSATION AND EASILY SENSE LEVEL THROUGH RAINING BAGASSE AND JUICE MOISTURE
- INFRA RED LIGHT KNOWN FOR DEEP PENETRATION AND USED IN MILITARY APPLICATIONS FOR NIGHT VISION, MEDICAL APPLICATIONS LIKE DEEP FOMENTATION HENCE THE CHOICE OF IR FOR THIS CRITICAL APPLICATION.
- 500+ SUGAR MILLS USE YUTECH IR SENSORS IN INDIA, ASIA PACIFIC AND AFRICAN REGIONS



BAGASSE SILO LEVEL SENSING AND TRANSMISSION SYSTEM

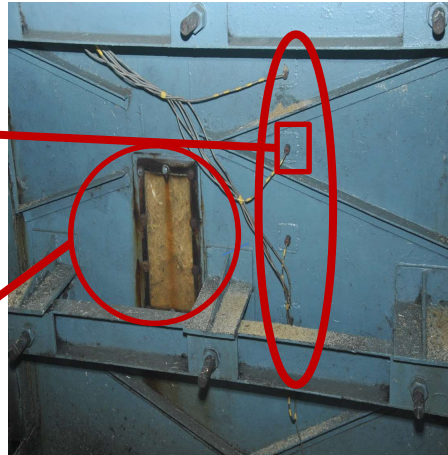
INFRA-RED OR IR BAGASSE SILO LEVEL SENSORS



INFRA RED LEVEL SENSOR INSTALLATION PICTURE

SENSOR MOUNTING PLATE WELDED ON THE CHUTE / SILO. PLEASE SEE OPERATING INSTRUCTIONS FOR INSTALLATION PROCEDURE AND GUIDANCE_

PROPER BAGASSE SILO LEVEL SENSING RESULTS IN CONTINUOUS AND MAINTAINED FUEL FEEDING TO BOILER AND AVOIDS SILO OVERFLOW / CHOKING



BUILT-IN RAINING BAGASSE COMPENSATION: TO ACCURATELY SENSE, ANALYZE, CALCULATE AND DERIVE ACCURATE CHUTE LEVEL WITHIN A VERY CHALLENGING ENVIRONMENT OF RESIDUAL JUICE DIRT, STICKY BAGASSE DUST AND VIBRATION

TECHNICAL SPECIFICATIONS FOR BAGASSE SILO LEVEL SENSING AND TRANSMISSION SYSTEM :

- **POWER SUPPLY:** 85 - 265 VAC, 50 – 60HZ
- **ANALYZER ENCLOSURE:** IP67 FIELD MOUNTED DUST AND MOISTURE-PROOF
- **INPUT:**
 - IR SENSOR SIGNALS
- **CALIBRATION CAN BE DONE FROM :**
 - **KEYBOARD:** KEYBOARD WITH 5 KEYS IS PROVIDED IN THE ANALYZER
- **DISPLAY:** 4 DIGIT LED DUAL DISPLAY, LED AS PER NUMBER OF LEVELS
- **SIGNAL OUTPUT:**
 - 4 - 20 MA PROCESSED MEASURED OR ANALYZED VARIABLE OUTPUT
 - POTENTIAL-FREE RELAY OUTPUT FOR EACH SENSOR INPUT

PRODUCT CODES FOR BAGASSE SILO LEVEL SENSING AND TRANSMISSION SYSTEM OF VARIOUS SENSOR COMBINATIONS ARE GIVEN BELOW:

A15BSAACIR4C1R4FM (4 LEVEL SYSTEM)
A15BSAACIR6C1R6FM (6 LEVEL SYSTEM)
A15BSAACIR8C1R8FM (8 LEVEL SYSTEM)
A15BSAACIR10C1R10FM (10 LEVEL SYSTEM)
A15BSAACIR12C1R12FM (12 LEVEL SYSTEM)
A15BSAACIR16C1R16FM (16 LEVEL SYSTEM)

PRODUCT CODES FOR INFRA-RED DONNELLY CHUTE / BAGASSE SILO LEVEL SENSOR:

ASDDCLIRS10: USE FOR CHUTE LEVEL SENSING BEFORE MACERATION WATER IS APPLIED.

ASDDCLIRS12: USE FOR CHUTE LEVEL SENSING AFTER HOT WATER MACERATION IS APPLIED. IT IS THE HIGH-TEMPERATURE VARIANT WHICH CAN WITHSTAND OPERATING TEMPERATURES UP TO 90°C.

PLEASE VISIT OUR WEBSITE www.yutechautomation.com.

YU Technologies Pvt. Ltd.

HO & Works: B 8/5, MIDC, Miraj, 416 410, Distt: Sangli, Maharashtra, India.

T: +91 233 2644042, +91 916 832 4851, +91 916 832 5127 / 8.

E: info@yutech.in; sale@yutech.in

W: www.yutech.in; www.yutechautomation.com

CHANNEL PARTNER: